

TION

RIE



**Office of the Monroe County Surveyor**  
**Trohn Enright-Randolph**

---

Health Services Building  
119 West 7<sup>th</sup> Street  
Bloomington, IN 47404  
Phone: (812) 349-2570

Dear User,

The following images were obtained in 2017 by the Office of the Monroe County Surveyor from the State Imaging and Microfilm Laboratory at the Indiana State Archives. The field notes and plats for Brown County are stored on microfilm Reel 5923 at the Indiana State Archives. Each page provided by the State Imaging and Microfilm Laboratory is approximately 18MB. Our office combined the pages by Township & Range and reduced the resulting pdfs. This process may have caused some degradation in quality. We will provide unreduced images of specific pages if required. Please contact us at 812-349-2570 or at [SurveyorsOffice@co.monroe.in.us](mailto:SurveyorsOffice@co.monroe.in.us) to request a higher quality image of any specific page.

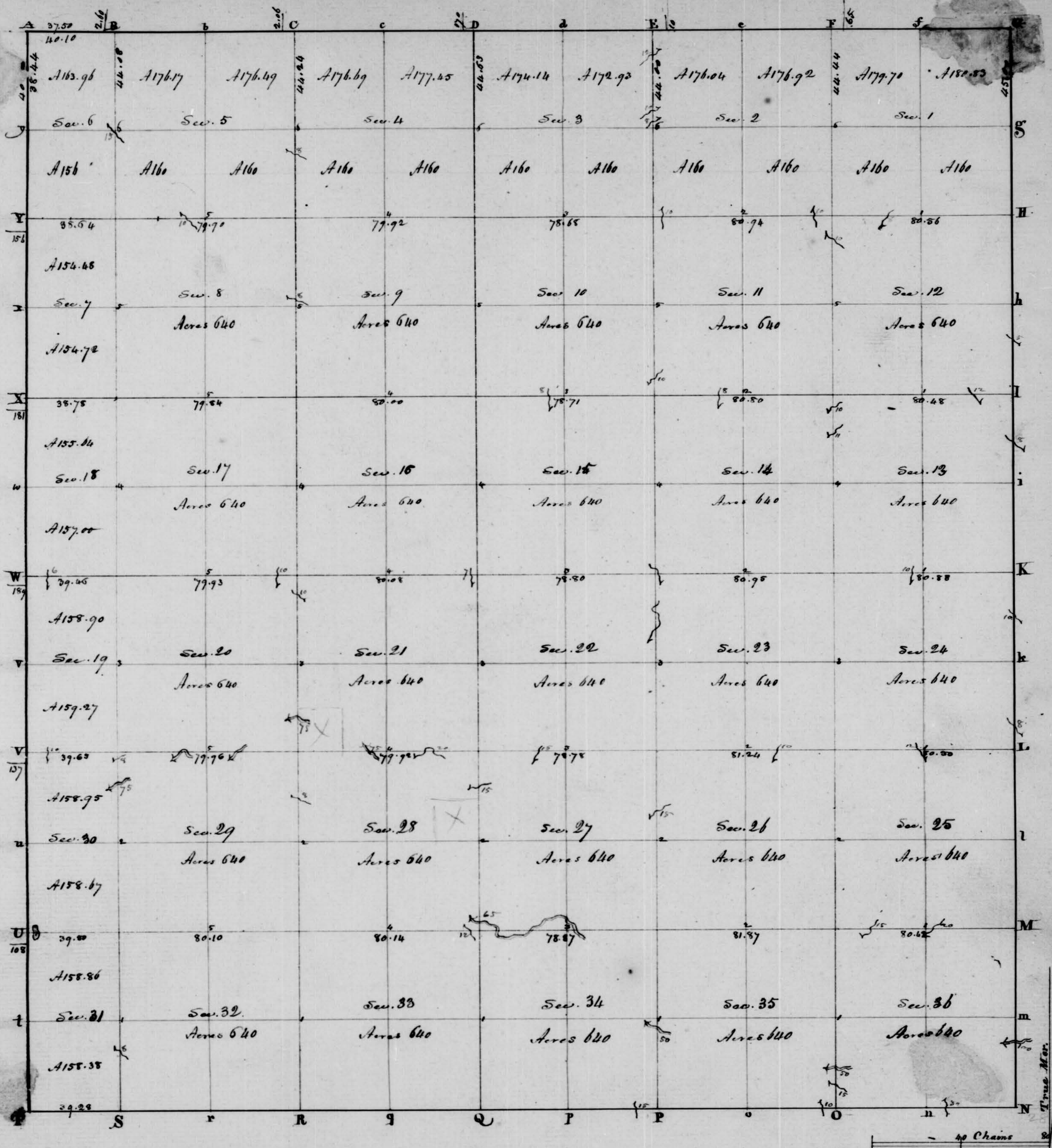
The pdfs are bookmarked with the original page numbers as assigned by the State Imaging and Microfilm Laboratory.

Be prepared to provide the county name, reel number, and the required page numbers when requesting full sized images.

If you would like a DVD of an entire county, please provide us with one DVD per county along with a self-addressed, stamped envelope.

Trohn Enright-Randolph  
Monroe County Surveyor





Township N. X North, Range N. I East 2<sup>nd</sup> Mer. Surveyed by Tho. Brown ..... 1819.

Description of the Soil on the interior Sectional lines.

Between sections	Quality &c	Between sections	Quality &c	Between sections	Quality &c
35.36	2 <sup>nd</sup> rate, Broken Birch, Poplar Sugar, Ash, Dogwood &c	31.32	2 <sup>nd</sup> rate, Broken	4.5	3 <sup>rd</sup> rate, Broken
36.37	2 <sup>nd</sup> rate, Broken, timber same	32.33	Same	5.6	Same
23.24	2 <sup>nd</sup> rate, Broken	27.28	2 <sup>nd</sup> & 3 <sup>rd</sup> rate, level & Broken	31.32	Same
24.25	Same	28.29	2 <sup>nd</sup> rate, level	29.30	Same
25.26	Same	29.30	2 <sup>nd</sup> & 3 <sup>rd</sup> rate, level & Broken	30.31	2 <sup>nd</sup> & 3 <sup>rd</sup> rate, level & Broken, Oak, Ash, Birch, Maple &c
12.13	Same	21.22	2 <sup>nd</sup> rate, Broken	29.30	Same
13.14	Same	18.19	Same	30.31	Same
14.15	Same	15.16	2 <sup>nd</sup> & 3 <sup>rd</sup> rate, Broken	20.21	Same
15.16	Same (last 40 chains 2 <sup>nd</sup> rate level)	16.17	4 <sup>th</sup> rate, Broken	19.20	2 <sup>nd</sup> rate, level & level, Birch, Ash, Elm &c
1.2	Same	7.8	2 <sup>nd</sup> rate, Broken	17.18	2 <sup>nd</sup> & 3 <sup>rd</sup> rate, Broken
1.2	2 <sup>nd</sup> rate, Broken, Oak, Hickory, Infusoria, briars &c	3.4	Same	18.19	Same
34.35	1 <sup>st</sup> & 2 <sup>nd</sup> rate, level, last 40 chains Broken	3.4	Same	17.18	2 <sup>nd</sup> & 3 <sup>rd</sup> rate, Broken
26.27	2 <sup>nd</sup> rate, Broken	32.33	2 <sup>nd</sup> & 3 <sup>rd</sup> rate, Broken	8.9	3 <sup>rd</sup> rate, Broken
27.28	2 <sup>nd</sup> rate, Broken	28.29	Part level 2 <sup>nd</sup> rate, part broken 2 <sup>nd</sup> rate	7.8	2 <sup>nd</sup> rate, Broken, Sugar, Ash, Poplar, Birch, Oak &c
28.29	Same	29.30	2 <sup>nd</sup> rate, Broken, Birch, Oak, Hickory, Sugar &c	7.8	3 <sup>rd</sup> rate, Broken
22.23	2 <sup>nd</sup> & 3 <sup>rd</sup> rate, Broken	21.22	2 <sup>nd</sup> & 3 <sup>rd</sup> rate, level & Broken	5.6	Same
14.15	Same, part level	20.21	Same	6.7	Same
16.17	Same, Oak, Hickory, Sugar, Ash, Hazel &c	16.17	2 <sup>nd</sup> rate, Broken	5.6	2 <sup>nd</sup> & 3 <sup>rd</sup> rate, Broken
11.12	3 <sup>rd</sup> rate, Broken	16.17	Same		
10.11	Same	9.10	Same		
2.3	Same	8.9	Same		



## T9 N. R1 E.

North Between Sect. 4 & 5  
 17.45 A Hickory 8 in. dia.  
 40.00 qf. Sec. cor. Beech 12 S 85 W 29  
                     Sugar 12 S 74 E 75  
 52.00 A W. Walnut 11 in. dia.  
 79.00 Intersected North boundary & set  
       post, 7<sup>th</sup> 61<sup>st</sup> West of qf. Sec. post  
       on South side of Sec. 33 S 10  
             Beech 14 N 66 E 20  
             Poplar 18 S 12 E 12  
       Land hilly & broken 2<sup>nd</sup> rate; Poplar,  
       Sugar, Beech &c

North Between Sect. 7 & 8 began at qf. Sec. cor.  
 0.17 Old Ind. boundary  
 13.30 Sugar 11 in. diam.  
 15.00 a brook 6 in. N 80 W  
 40.00 Set Temporary Sec. post  
 East Between Sect. 6 & 7 from old Ind. bound.  
 17.70 Set Temporary qf. Sec. post  
 54.00 Intersected N & S line 50 in. North of  
       Temporary post. Set post at inter-  
       section for cor. of Sect. 5, 6, 7, 8  
             Beech 16 S 5 E 40  
             Do 18 N 55 W 15  
       Land hilly & poor; W. Oak, Hickory  
       & Beech; Ironwood & Sassafras

West returned West between Sect. 6 & 7  
 40.00 qf. Sec. cor. Gum 30 S 32 E 33  
             Beech 24 N 18 W 54

East Between Sect. 5 & 8 on random  
 40.00 Temporary qf. Sec. post  
 77.00 Intersected N & S line 91 in. South  
       Land hilly & poor; W. & B. Oak, Hickory

West corrected  
 38.50 qf. Sec. cor. Beech 12 N 4 E 46  
             Sugar 6 S 7 W 22  
 77.00 Sec. cor.

North Between Sect. 5 & 6  
 21.00 a Beech 7 in. diam.  
 40.00 qf. Sec. cor. Beech 12 S 78 W 30  
             Do 10 S 73 W 40  
 49.40 a brook 28 in. ~~7 1/2~~ diam.  
 57.50 a brook 8 in. N 40 W  
 78.25 Intersected & set post on North bound-  
       ary 5<sup>th</sup> 34 West of qf. Sec. post south  
       side of Sec. 32 S 10  
             Beech 13 S 66 E 23  
             W. Oak 7 N 46 W 63  
       Land same.

Surveyed in Feb. 1820 by  
                     Jas. Hedges S.S.

from page 55.

East Random Between Sect. 17 & 20  
 40.00 Set temp 1/4 post  
 80.22 Intersect N & S line 30 in. N. of Cor.  
       Land the same.

West corrected Between Sect. 17 & 20.  
 40.11 Set 1/4 post. from which  
             Hickory 7 N 50 W 24,  
             Beech 6 S 7 E 18,  
 80.22 Sec. Cor.

Township N. 10 North, Range N. 1 East 2<sup>nd</sup> Mer.

Range line Var. 6° 45' E.  
 North Between Ranges 1 & 2 East, Town 10  
       North, East side of Sec. 36 &c  
 14.50 a Beech 14 in. diam.  
 30.50 a brook 100 in. West  
 40.00 qf. Sec. cor. Beech 10 S 30 W 19  
             Do 10 N 1 W 24  
 58.50 a W. Oak 18 in. diam.  
 80.00 Set post cor. of Sect. 25 & 36  
             Beech 10 S 20 E 28  
             Hickory 10 S 75 W 4  
       Land Beech land

North on East side of Sec. 25  
 6.50 Poplar 40 in. diam.  
 40.00 qf. Sec. cor. Beech 13 N 44 W 5  
             Dogwood 7 S 25 E 22  
 57.12 Beech 18 in. diam.  
 80.00 Set post cor. of Sect. 24 & 25  
             Gum 22 S 37 E 8  
             Beech 14 N 11 E 19  
       Land rolling; Beech, Oak &c

North on East side of Sec. 24  
 15.00 a brook 8 in. S E  
 28.00 a Beech 14 in. diam.  
 40.00 qf. Sec. cor. Beech 14 S 8 E 18  
             Walnut 12 N 33 E 37  
 60.00 a brook 10 in. S E  
 62.05 a Beech 14 in. diam.  
 80.00 Set post cor. of Sect. 13 & 24  
             Beech 18 N 42 W 18  
             Poplar 36 S 41 W 17  
       Land broken; Oak, Beech &c

North on East side of Sec. 13  
 40.00 qf. Sec. cor. Gum 14 N 1 E 28  
 61.50 a brook 8 in. S E

80.00 Set post cor. of Sect. 12 & 13  
             Oak 13 N 8 W 11  
             Do 7 S 54 W 6  
       Land brushy & broken; oak &c

North on East side of Sec. 12  
 23.00 a brook 5 in. S E  
 40.00 qf. Sec. cor. W. Oak 18 S 19 E 44  
             Dogwood 6 S 82 W 6  
 80.00 Set post cor. of Sect. 1 & 12  
             W. Oak 8 N 14 W 3  
             Do 6 S 46 W 12  
       Land same

North on East side of Sec. 1  
 25.50 W. Oak 40 in. diam.  
 40.00 qf. Sec. cor. W. Oak 24 S 35 W 64  
 52.38 W. Oak 40 in. diam.  
 85.00 Set post cor. of Towns 10 & 11 North  
       Ranges 1 & 2 East,  
             Beech 10 N 68 W 12  
             Sugar 12 S 81 E 18  
       Land broken - Oak &c. Same 24<sup>th</sup> 1824

Town line = Random  
 West Between Towns 9 & 10 N. Range 1 & 2  
       E. on Random - South side of Sec. 36  
 30.00 a brook 7 in. North  
 40.00 Temporary qf. Sec. post  
 80.00 Temporary post for Sect. 35 & 36  
       Land level; Beech &c

West on South side of Sec. 35  
 10.65 a brook 10 in. North  
 40.00 qf. Sec. Temporary post  
 80.00 Temporary post for Sect. 34 & 35  
       Land rolling; Oak, Beech &c

West on South side of Sec. 34  
 13.80 a brook 15 in. North  
 40.00 Temporary qf. Sec. post



## T 10 N, R 1 E.

80.00	Temporary post for Sec. 33 & 34 Land broken; Beech, oak &c	East	on South side of Sec. 35
West	On South side of Sec. 33	40.00	q. Sec. cor. Beech 30 N 63 E 33 Cherry 9 N 64 W 9
40.00	Temporary q. Sec. cor.	80.00	Set post cor. of Sec. 35 & 36 Beech 8 S 65 E 20 Do 30 S 71 W 6
80.00	Temporary post for Sec. 32 & 33 Land same	East	on South side of Sec. 36
West	On South side of Sec. 32	40.00	q. Sec. cor. Gum 24 N 82 E 13 Beech 10 S 33 W 17
40.00	q. Sec. Temporary post	80.00	Four corner - June 25, 1819 Surveyed by John McDonald & S.
80.00	Temporary post for Sec. 31 & 32 Land broken; Oak, Hickory &c	Subdivision. Oct 21, 1819.	
West	on South side of Sec. 31	North	Between Sec. 35 & 36
39.28	Intersected Meridian 5.20 S North of Town corner. Land same	10.05	a brook 15 S. - NW
True line		15.00	a Sugar 16 in. diam.
East	Between Towns 9 & 10, corrected South boundary of Sec. 31, 310-	16.75	a Creek 50 S. - West
39.28	Set post cor. of Sec. 31 & 32 Beech 13 S 25 W 10 Do 10 N 32 W 24	28.65	a Beech 14 in. diam.
East	South side of Sec. 32	40.00	q. Sec. cor. Beech 14 N 62 E 19 Do 6 N 54 W 17
40.00	q. Sec. cor. Beech 10 S 69 E 18 Do 10 N 42 W 24	47.22	Poplar 24 in. diam.
80.00	Set post cor. of Sec. 32 & 33 Hickory 20 N 44 W 16 Walnut 12 S 59 E 29	60.32	Beech 20 in. diam.
East	On South side of Sec. 33	80.00	Set post cor. of Sec. 25, 26, 35, 36 Beech 15 N 48 E 14 B. Gum 12 N 85 W 8
40.00	q. Sec. cor. Beech 24 S 10 E 23 Sassafras 8 N 5 W 9	Land broken 2 <sup>nd</sup> rate; Beech, Poplar, Sugar, ash, Ironwood, Logwood, Spruce	
80.00	Set post cor. of Sec. 33 & 34 Poplar 18 S 79 E 24 Dogwood 6 N 44 W 13	East	Between Sec. 25 & 36 on random
East	On South side of Sec. 34	13.75	a brook 15 S. - SW
40.00	q. Sec. cor. Gum 12 N 71 E 4 Beech 8 South 13	40.00	Temporary q. Sec. post
80.00	Set post cor. of Sec. 34 & 35 Beech 13 S 63 E 20 Do 8 N 81 W 22	44.10	a Stream 20 S. - WSW
		80.42	Intersect range line 33 S North Land broken 2 <sup>nd</sup> and 3 <sup>rd</sup> rate; Beech, W. Oak, Hickory, ash; Ironwood, Logwood, briars &c
		West	Corrected
		23.18	a Hickory 18 in. diam.
		40.21	q. Sec. cor. Beech 22 S 21 W 16 Do 16 N 10 E 35

## T 10 N, R 1 E.

58.64	a Beech 17 in. diam.	East	Between Sec. 13 & 24 on random
80.42	Sec. corner. - Aug. 24, 1819	34.10	a Stream 10 S. - SSW
North	Between Sec. 25 & 26	40.00	Temporary q. Sec. post
5.00	Enter windfall	80.88	Intersect range line 73 S South Broken 3 <sup>rd</sup> rate land; Ches. Oak, Span. Oak, Hickory W. Oak; Sassafras, Whortle- berry, Greenbriars &c
25.00	Left same	West	Corrected
26.50	a Beech 20 in. diam.	22.64	Ches. Oak 16 in. diam.
40.00	q. Sec. cor. Elm 4 N 75 W 20 Hickory 5 N 28 E 22	40.44	q. Sec. cor. Span. Oak 6 S 45 E 18 Dogwood 4 S 61 W 25
60.12	Beech 24 in. diam.	62.75	Ches. Oak 19 in. diam.
80.00	Set post cor. of Sec. 23, 24, 25, 26 Ches. Oak 11 N 72 E 10 Hickory 4 S 48 W 19	80.88	Sec. corner.
	Land broken 3 <sup>rd</sup> rate - W. Oak, Beech, Hickory, Ches. Oak, Ironwood, Logwood, Whortleberry & briars.	North	Between Sec. 13 & 14
East	Between Sec. 24 & 25 on random	22.08	W. Oak 30 in. diam.
37.50	a Stream 12 S. - SSE	40.00	q. Sec. cor. W. Oak 24 N 44 W 10 Hickory 5 N 67 E 24
40.00	Temporary q. Sec. post	64.00	a brook 11 S. - SW
80.50	Intersected Range line 12 S North Land same	68.42	a Ches. Oak 14 in. diam.
West	Corrected	72.48	a brook 10 S. - SSW
20.50	Beech 14 in. diam.	80.00	Set post cor. of Sec. 11, 12, 13, 14 W. Oak 24 S 61 W 85 Dogwood 3 S 32 E 12
40.25	q. Sec. cor. Sugar 12 N 31 W 33 Beech 20 S 57 W 52	Land same - Aug. 25, 1819	
59.80	Hickory 14 in. diam.	East	Between Sec. 12 & 13 on random
80.50	Sec. corner	40.00	Temporary q. Sec. post
North	Between Sec. 23 & 24	62.23	a Stream 12 S. - SE
20.77	Red Oak 17 in. diam.	80.48	Intersect Range line 120 South Land same
30.87	Poplar 16 in. diam.	West	Corrected
40.00	q. Sec. cor. - a Beech 24 in. diam. Beech 11 S 57 E 14 Dogwood 4 N 13 W 16	23.80	a Beech 25 in. diam.
75.10	Beech 18 in. diam.	40.24	q. Sec. cor. B. Gum 16 S 31 W 28 Do 4 S 34 E 15
80.00	Set post cor. of Sec. 13, 14, 23, 24 Dogwood 5 N 51 E 9 Hickory 3 S 32 W 16	57.78	W. Oak 12 in. diam.
	Land same	80.48	Sec. corner



## T. 10 N. R. 1 E.

North	Between Sect. 11 & 12	North	Between Sect. 34 & 35
17.50	B. Gum 10 in. diam.	16.75	W. Oak 26 in. diam.
40.00	g. Sec. cor. Sugar 6 N 52 E 19	32.40	Hickory 30 in. diam.
	Do 5 S 31 W 14	37.48	Stream 50 S. W. N. W.
60.54	Ches. Oak 18 in. diam.	40.00	g. Sec. cor. Hickory 3 N 39 W 4
70.25	a Brook 10 S. N. W.		Buckeye 16 S 33 E 15
80.00	Set post cor. to Sect. 1, 2, 11, 12	59.00	Enter Windfall
	Beech 4 N 29 W 22	72.40	Left Windfall - a B. Gum Stump 18 in. diam.
	Do 25 S 23 W 44	80.00	Set post cor. of Sect. 26, 27, 34, 35
	Land, first 60 ch. Broken 3 <sup>rd</sup> rate, remainder level 2 <sup>nd</sup> rate; W. Oak, Hickory, Beech, ash, Sugar; Whortleberry, briars & Spice		Dogwood 4 N 11 E 13
East	Between Sect. 14 & 12 on random		Sugar 10 N 47 W 21
24.50	a brook 8 S. W. S. W.		Land, first half level 2 <sup>nd</sup> rate, last half broken 3 <sup>rd</sup> rate; Sugar, Hickory, Walnut, Buckeye, Beech, Span. Oak, W. Oak, Ironwood, Dogwood; Spice, Hazle, briars &c.
40.00	Temporary g. Sec. cor.	East	Between Sect. 26 & 35 on random
80.56	Intersected Range line 78 S. North	20.00	Enter Windfall
	Broken 3 <sup>rd</sup> rate land - Ches. Oak, Span. Oak, W. Oak, Hickory, Dogwood, Whortleberry &c.	40.00	Temporary g. Sec. cor
West	Corrected	74.00	Left Windfall
18.13	a Hickory 14 in. diam.	81.87	Intersect N & S line 44 S. North
40.28	g. Sec. cor. W. Oak 18 S 57 W 18		4 <sup>th</sup> rate land; Span. Oak, Beech, W. Oak; briars, grape vine, &c.
	Hickory 10 N 44 E 14	West	Corrected
60.78	Span. Oak 18 in. diam.	7.10	a Beech 14 in. diam.
80.56	Sec. corner.	40.93	g. Sec. cor. in Windfall - raised a pile of stones
North	Between Sect. 18 & 2	58.67	Beech 17 in. diam.
19.50	W. Oak 25 in. dia.	81.87	Sec. corner
40.00	g. Sec. cor. Span. Oak 28 N 60 W 18	North	Between Sect. 26 & 27
	Sugar 18 S 50 E 12	21.74	a Sugar 20 in. diam.
64.04	Span. Oak 6 in. dia.	40.00	g. Sec. cor. W. Oak 19 N 52 W 28
84.44	Intersected and left post on North boundary 65 S. West,		Do 14 S 53 E 21
	W. Oak 14 S 52 W 28	52.10	Stream 15 S. S. W.
	Hickory 10 S 23 E 21	62.22	Beech 18 in. diam.
	Broken 4 <sup>th</sup> rate; B. Oak, Ches. Oak, Hickory; Sassafras, Whortleberry, Briars &c. Aug. 26. 1819		

## T. 10 N. R. 1 E.

80.00	Set post cor. of Sect. 22, 23, 26, 27	40.00	Temporary g. Sec. post
	W. Oak 5 N 32 E 10	80.95	Intersected N & S line 118 North of post
	W. Oak 19 N 57 W 8		Land. <del>part</del> part level 2 <sup>nd</sup> rate, part broken 3 <sup>rd</sup> rate; W. Oak, B. Oak, B. Gum, Ches. Oak, Beech, ash, Sugar, Dogwood; Sassafras, Spice &c.
	Broken 3 <sup>rd</sup> rate land; W. Oak, B. Oak, Span. Oak, Hickory, Sugar, Ironwood, Dogwood, Greenbriars &c.	West	Corrected
East	Between Sect. 23 & 26 on random	16.90	B. Gum 14 in. diam.
40.00	Temporary g. Sec. post	40.47	g. Sec. cor. Beech 7 N 20 E 17
58.80	a Stream 12 S. W. S. W.		Do 14 S 10 W 12
81.24	Intersect N & S line 38 <sup>th</sup> North	50.85	a Beech 18 in. diam.
	Broken 3 <sup>rd</sup> rate - W. Oak, B. Oak, Ches. Oak, Hickory, Dogwood; Sassafras, Whortleberry & Briars	80.95	Sec. corner
West	Corrected	North	Between Sect. 14 & 15
24.56	W. Oak 14 in. diam.	1.50	a Stream 10 S. S. E.
40.62	g. Sec. cor. Poplar 6 N 51 E 8	24.75	Hickory 16 in. diam.
	Sassafras 4 N 72 W 22	40.00	g. Sec. cor. W. Oak 5 N 35 E 16
63.18	Hickory 22 in. diam.		Span. Oak 12 N 56 W 32
81.24	Sec. corner - 27 <sup>th</sup> Aug. 1819	64.57	a W. Oak 30 in. diam.
North	Between Sect. 22 & 23	80.00	Set post cor. to Sect. 10, 11, 14, 15
21.25	Beech 18 in. diam.		Poplar 8 N 45 E 14
40.00	g. Sec. cor. Ironwood 5 S 45 E 6		Beech 30 S 6 W 27
	Do 4 N 42 W 18		Land broken 2 <sup>nd</sup> & 3 <sup>rd</sup> rate; Beech, W. Oak, B. Oak, Hickory, Sugar, ash, Dogwood, Ironwood; Hazle, Greenbriars - Aug. 28. 1819
59.25	a Stream 15 S. S. S. W.	East	Between Sect. 11 & 14 on random
60.37	Walnut 56 in. diam.	28.50	a Stream 8 S. S. W.
64.32	Same Stream S. S. E.	40.00	Temporary g. Sec. post
67.40	Same Stream S. S. W.	80.80	Intersect N & S. line at post
80.00	an Elm on West bank of said Stream		Land broken 3 <sup>rd</sup> rate; W. Oak, B. Oak, Beech, Hickory, Dogwood, Ironwood; Whortleberry &c.
	13 in. diam., cor. of Sect. 14, 15, 22, 23	West	Between Sect. 11 & 14 Marking
	Sugar 7 N 73 W 54	20.47	a W. Oak 18 in. diam.
	Elm 14 S 3 W 6	40.00	g. Sec. cor. Dogwood 3 S 32 W 14
	Broken 2 <sup>nd</sup> & 3 <sup>rd</sup> rate land; W. Oak, B. Oak, Beech, Walnut, Sugar, Sycamore; Spice &c.		W. Oak 30 N 44 W 28
East	Between Sect. 14 & 23 on random	57.00	a Hickory 14 in. diam.
0.20	a brook 10 S. S. S. E.	71.00	a W. Oak 19 in. diam.
		80.80	Sec. corner



## T 10 N. R 1 E

North Between Sect 10 & 11	Beech, Hickory, Span. Oak, Poplar, Walnut, Elm; Sassafras, briars, Spice.
7.00 a brook 10 S. S.W.	Aug. 29. 1819
23.90 a B. Gum 12 in. diam.	
40.00 of Sec. cor. B. Oak 24 N 65 E 8	North Between Sect 33 & 34
Dogwood 4 S 75 W 12	19.85 a Beech 16 in. diam.
58.84 a Beech 30 in. dia.	40.00 of Sec. cor. Dogwood 4 N 10 W 7
80.00 Set post cor. of Sect 2. 3. 10. 11	Ironwood 3 S 43 E 22
Sugar 3 S 57 E 10	45.00 Enter Windfall
Elm 4 S 40 W 85	63.00 an Elm Stump 30 in. diam.
Land broken 3 <sup>rd</sup> rate; B. Oak, W. Oak, Hickory, Poplar, Dogwood, Iron- wood; Spice &c	67.00 Left Windfall
East Between Sect 2 & 11 On random	80.00 Set post cor. of Sect 27. 28. 33. 34
5.20 a brook 10 S. North	Beech 6 N 50 E 14
40.00 Temporary of Sec. post	Hornbeam 4 N 79 W 12
70.84 a brook 10 S. N.W.	Land first 60 ch. broken 3 <sup>rd</sup> rate, remainder level 2 <sup>nd</sup> rate; Beech, W. Oak, B. Oak, Elm, Sugar; sassafras, Spice, briars &c
80.94 Intersect N & S line 25 S. South	East Between Sect 27 & 34 on random
Land broken 3 <sup>rd</sup> rate; W. Oak, B. Oak, Beech, Hickory, Dogwood; Whortleberry, briars, &c	7.50 a stream 65 S. W. N.W.
West Corrected	23.00 Same stream W. S.W.
15.75 a Ches. Oak 24 in. diam.	40.00 Temporary of Sec. post
40.47 of Sec. cor. Beech 14 S 32 W 18	46.00 Same stream W. N.W.
Do 12 N 72 E 27	78.87 Intersected N & S line at post
62.25 Hickory 15 in. diam.	Land part level & part broken, 2 <sup>o</sup> . & 3 <sup>rd</sup> rate; Beech, Sugar, Hickory, Ash, Sycamore & Ironwood, Dogwood; Spice, briars &c
80.94 Sec. corner	West Between Sect 27 & 34 - Marking
North Between Sect 2 & 3	17.59 a Hickory 18 in. diam.
22.68 a W. Oak 30 in. diam.	39.43 of Sec. cor. Buckeye 10 S 34 E 7
40.00 of Sec. cor. Span. Oak 30 N 42 E 32	Hornbeam 4 N 61 W 13
Poplar 2 S 45 W 20	57.75 a Hickory 17 in. diam.
45.25 a brook 8 S. wide N.E.	78.87 Sec. corner
49.00 a brook 10 S. N.E.	North Between Sect 27 & 28
60.37 a W. Walnut 16 in. diam.	3.70 a stream 65 S. W. N.W.
74.50 a stream 12 S. E. N.E.	22.44 a Maple 18 in. diam.
84.00 Intersected <del>Turn</del> line 10 S. West	
Beech 4 S 58 E 24	
Do 3 S 30 W 34	
Land 3 <sup>rd</sup> rate; W. oak, B. oak,	

## T 10 N. R 1 E.

40.00 of Sec. post - B. Gum 20 N 29 W 7	East Between Sect 15 & 22 on random
Beech 4 N 64 E 5	40.00 Temporary of Sec. cor.
53.00 a stream 15 S. N.W.	78.80 Intersected N & S line 27 S. North
66.05 a Sugar 21 in. diam.	Land broken 3 <sup>rd</sup> rate; Beech, Sugar, W. Oak, B. Oak, Hickory, Dogwood, Ironwood, Spice, Briars &c
80.00 Set post cor. to 21, 22, 27, 28	West Corrected
Beech 4 N 67 W 23	21.72 ash 22 in. diam.
B. Oak 4 S 53 E 8	39.40 of Sec. cor. Sugar 8 S 48 E 21
Land level 2 <sup>nd</sup> rate; Beech, ash, Maple, Sugar, W. Oak, B. Oak; Spice, hazel, Briars &c	Do 7 N 14 W 27
East Between Sect 22 & 27 on random	56.60 a Sugar 19 in. diam.
30.15 a stream 15 S. S.W.	78.80 Sec. corner
40.00 Set temporary of Sec. post	North Between Sect 15 & 16
78.78 Intersect N & S line 35 S. North	25.05 a Ches. Oak 19 in. diam.
Land part level, part broken 2 <sup>nd</sup> & 3 <sup>rd</sup> rate; Beech, ash, Sugar, W. Oak, Hickory, B. Oak & Ironwood, Dogwood, Spice, Briars &c	40.00 of Sec. cor. Hickory 12 N 70 E 25
West Corrected Between Sect 22 & 27	Do 14 S 74 W 19
20.33 Sugar 14 in. diam.	61.35 a Ches. Oak 16 in. diam.
39.39 of Sec. cor. Maple 6 N 8 E 13	80.00 Set post cor. of Sect 9. 10. 15. 16
Hickory 16 S 72 W 16	Beech 22 N 60 W 18
59.48 Beech 22 in. diam.	Maple 24 S 82 E 41
78.78 Sec. corner	Land 3 <sup>rd</sup> & 4 <sup>th</sup> rate, broken; Ches. Oak, Span. Oak, W. Oak, B. Oak, Beech, Dog- wood, Ironwood; Whortleberry &c
North Between Sect 21 & 22	East Between Sect 10 & 15 on random
19.93 a Beech 19 in. diam.	31.64 a Brook 8 S. S.E.
40.00 of Sec. cor. Beech 7 N 41 E 17	40.00 Temporary of Sec. post
Maple 14 S 68 W 16	78.71 Intersect N & S line 20 S. North
58.74 a W. Oak 12 in. diam.	Land broken 4 <sup>th</sup> rate; W. oak, B. Oak, Hickory, Ches. Oak, Ironwood; Whortleberry
80.00 Set post cor. of Sect 15. 16. 21. 22	West Corrected
Beech 18 N 50 E 10	13.10 a Beech 16 in. diam.
Sugar 12 S 43 W 11	39.35 of Sec. cor. B. Gum - N 52 W 18
Land broken 3 <sup>rd</sup> rate; W. oak, B. Oak, Span. Oak, Beech, Hickory, Ironwood Dogwood; Spice -	W. Oak 5 S 1 E 5
Set 16. 1819	57.37 a B. Gum 18 in. diam.
	78.71 Sec. corner



## T. 10 N. R. 1 E.

North	Between Sect. 9 & 10	North	Between Sect. 32 & 33
21.05	a Ches. Oak 18 in. diam.	19.58	a Hickory 24 in. diam.
40.00	q. Sec. cor. Poplar 12 S 61 W 16	23.00	Enter Windfall
	Dogwood 4 N 64 E 18	40.00	q. Sec. cor. B. Gum Stump 20 N 70 W 37
62.54	a Poplar 28 in. diam.		Beech 6 N 30 E 43
80.00	Set post cor. of Sect. 34, 9, 10	53.50	Left Windfall
	Beech 14 N 48 E 6	57.43	a Sugar 34 in. diam.
	Do 12 S 60 W 34	80.00	Set post cor. to Sect. 28, 29, 32, 33
	Land broken 3 <sup>rd</sup> rate; W. Oak, B. Oak, Beech, Poplar, Hickory & Sassafras. Briars &c.		Beech 16 N 8 E 18
East	Between Sect. 34 & 10, on random.		Poplar 13 S 28 W 17
40.00	Temporary q. Sec. post		Land broken 2 <sup>nd</sup> & 3 <sup>rd</sup> rate; Beech, Poplar, Sugar, W. Oak, Hickory; Briars, Groppines, Sassafras &c.
78.68	Intersected N & S line 12 S South	East	Between Sect. 28 & 33 on random
	Land broken 3 <sup>rd</sup> rate; W. Oak, B. Oak, Hickory, Ash, Ches. Oak, Ironwood, Dogwood; Whortleberry	40.00	Set temporary q. Sec. post
		74.50	a Brook 12 S NW
		80.14	Intersect N & S line 5 S North
West	Corrected		Land, part level 2 <sup>nd</sup> rate, part broken 3 <sup>rd</sup> rate; W. Oak, B. Oak, Span. Oak, Ash, Elm; Sassafras, vines, briars &c.
22.56	B. Oak 16 in. diam.		
39.34	q. Sec. cor. Dogwood 3 N 56 W 11	West	Corrected
	Beech 30 S 20 E 15	22.99	a Beech 18 in. diam.
58.58	Ash 18 in. diam.	40.07	q. Sec. cor. W. Oak 18 N 71 W 21
78.68	Sec. corner		Do 12 S 9 E 19
North	Between Sect. 3 & 4	58.24	A Hickory 16 in. diam.
24.85	a Hickory 14 in. diam.	80.14	Sec. corner
40.00	q. Sec. cor. Span. Oak 46 N 65 E 10	North	Between Sect. 28 & 29
	Dogwood 6 S 36 W 21	20.94	A Span. Oak 10 in. dia.
57.92	a Hickory 8 in. diam.	40.00	q. Sec. cor. Beech 17 S 53 W 28
84.63	Intersected and set post on Town line 1.70 S East of cor.		Poplar 24 N 17 E 29
	Beech 23 S 55 E 19	57.82	Sugar 14 in. diam.
	Dogwood 6 S 20 W 25	60.00	A Brook 8 S W. N. W.
	Land broken 3 <sup>rd</sup> rate; Beech, Hickory, W. Oak, B. Oak; Ironwood, Dogwood; Briars &c.	80.00	Set post cor. of Sect. 20, 21, 28, 29
	Dec. 17 <sup>th</sup> 1819		Beech 22 N 39 W 22
			Do 23 S 88 W 18

## T. 10 N. R. 1 E.

	Land broken 3 <sup>rd</sup> rate; Beech, W. Oak, Span. Oak, Hickory, Poplar, Sugar; Sassafras, Briars &c.	West	Corrected
		21.24	a Ches. Oak 20 in. diam.
		40.04	q. Sec. cor. Beech 10 N 24 E 10
			B. Gum 17 S 2 E 22
East	Between Sect. 21 & 28 on random	66.43	a W. Oak 30 in. diam.
29.50	a Stream 75 S W. N. W.	80.08	Sec. corner Dec. 17 <sup>th</sup> 1819
40.00	Temporary q. Sec. post		
55.25	a Stream 20 S S W	North	Between Sect. 16 & 17
61.56	Same Stream N. N. W.	25.06	a W. Oak 30 in. diam.
79.92	Intersected N & S line 26 S South	40.00	q. Sec. cor. Maple 6 N 60 E 10
	Land part level, part broken 2 <sup>nd</sup> & 3 <sup>rd</sup> rate; W. Oak, Beech, Sugar, Ash, Elm, Poplar; Spice &c.		Beech 19 S 40 W 19
		61.27	Span. Oak 16
		80.00	Set post cor. to Sect. 8, 9, 16, 17
West	Corrected		W. Oak 14 S 59 E 7
22.57	a Beech 22 in. diam.		Ches. Oak 4 N 43 W 27
39.96	q. Sec. cor. Beech 20 S 27 W 13		Broken 3 <sup>rd</sup> rate land; W. Oak, Beech, B. Oak, Ches. Oak, Span. Oak &c. with Whortleberry & Briars
	Sugar 12 N 3 E 35		
52.42	a Beech 18 in. diam.	East	Between Sect. 9 & 16 on random
79.92	Sec. corner	40.00	Temporary q. Sec. post
North	Between Sect. 20 & 21	80.00	Intersected N & S line 26 S South
14.60	a Stream 75 S NW		Land same
22.48	a Beech 22 in. diam.	West	Corrected
40.00	q. Sec. cor. Hickory 8 N 79 E 18	22.72	a Hickory 18 in. diam.
	Do 4 S 73 W 10	40.00	q. Sec. cor. Beech 28 S 41 E 18
59.53	a W. Oak 14 in. diam.		Beech 5 N 18 W 23
70.60	a brook 10 S S E.	57.08	a Ches. Oak 10 in. diam.
80.00	Set post cor. of Sect. 16, 17, 20, 21	80.80	Sec. corner
	Beech 6 S 54 W 10		
	Hornbeam 5 N 53 E 24	North	Between Sect. 8 & 9
	Land part level, part broken 2 <sup>nd</sup> & 3 <sup>rd</sup> rate; Beech, W. Oak, Hickory, Elm, Ash, Ironwood, Dogwood, Briars	20.48	Ches. Oak 16 in. diam.
		40.00	q. Sec. cor. Ches. Oak 12 N 17 E 18
			Dogwood 5 S 68 W 17
East	Between Sect. 16 & 21 on random	44.80	Brook 8 S W. N. W.
40.00	Temporary q. Sec. cor.	57.78	W. Oak 22 in. diam.
79.50	a Brook 7 S S E.	80.00	Set post cor. to Sect. 4, 5, 8, 9
80.08	Intersected N & S line 22 S South		B. Gum 16 N 40 E 15
	Land 3 <sup>rd</sup> rate land; W. B. Oak, Span. Oak, Hickory, Dogwood, Ironwood; Briars &c.		Hickory 16 N 63 W 24



## T 10 N. R 1 E.

	Land broken 3 <sup>rd</sup> rate; W. oak, B. oak, Hickory, Ches. oak, Ironwood, Whortleberry, Sassafras, Brians &c.		Span. oak 4 S 40 E 8 W. oak 23 N 73 W 45
East	Between Sect. 4 & 9 on random		Land broken 3 <sup>rd</sup> rate; Span. oak, W. oak, Beech, Hickory, ash; Sassafras, Brians, vines &c.
40.00	Temporary of Sec. post		
79.92	Intersect N & S line 4 S South	East	Between Sect. 29 & 32 on random
	Land broken 3 <sup>rd</sup> rate, Sugar, Beech, Hickory, ash, W. oak, B. oak; Spice, Sassafras, Brians &c.	40.00	Temporary of Sec. cor.
		80.10	Intersect N & S line 35 S, South
West	Corrected		Land Same
19.73	a Beech 16 in. diam.	West	Corrected
39.96	of Sec. cor. Beech 8 N 54 E 21	21.48	A Hickory 20 in. diam.
	Elm 5 S 58 E 25	40.05	of Sec. cor. Span. oak 10 N 44 W 8
56.04	a W. oak 17 in. dia.		Hickory 14 S 63 E 15
79.92	Sec. corner	65.06	a W. oak 22 in. diam.
North	Between Sect. 4 & 5	80.10	Sec. corner
20.70	a Ches. oak 38 in. diam.	West	Between Sect. 30 & 31
28.44	a brook 8 S, N. N. W.	19.54	W. oak 36 in. diam.
40.00	of Sec. cor. Hickory 10 N 76 W 25	35.40	Enter pond or glade
	Beech 18 S 24 E 31	39.50	Intersected Meridian 108 N of post
60.70	a B. oak 34 in. diam.		Set post - Maple 6 N 55 E 10
84.24	Intersected & Set post on Town line		Elm 5 S 12 W 18
	2.06 S East of cor.		Part level & part broken 2 <sup>nd</sup> & 3 <sup>rd</sup> rate;
	Beech 5 S 22 W 41		W. oak, ash, Beech, Hickory, with
	Dogwood 6 S 67 E 28		Sassafras, Spice &c.
	Land broken 3 <sup>rd</sup> rate; W. oak, Beech, Ches. oak, Hickory, Ironwood, Dogwood, Brians &c.	North	Between Sect. 29 & 30
	Sec. 18 <sup>th</sup> 1819	22.61	Sugar 18 in. diam.
North	Between Sect. 31 & 32	40.00	of Sec. cor. Beech 5 N 23 E 7
17.64	a Beech 18 in. diam.		B. oak 17 S 48 W 9
26.00	a brook 8 S, wide NW	57.53	a Beech 28 in. diam.
28.00	Enter Windfall	67.53	a Stream 75 W. S. W.
40.00	of Sec. cor. W. oak 18 N 42 W 31	77.56	a Brook 8 S S. S. W.
	B. gum 12 S 11 E 17	80.00	Set post cor. of Sect. 19, 20, 21, 30
61.80	a B. oak 10 in. diam.		Beech 13 N 27 W 51
80.00	Set post cor. of Sect. 29, 30, 31, 32		Hornbeam 12 S 60 E 30
			Land, part broken, not level, 2 <sup>nd</sup> & 3 <sup>rd</sup> rate; W. oak, Beech, Sugar, B. oak, Elm, Dogwood, Ironwood, Spice, Brians

## T 10 N. R 1 E.

East	Between Sect. 20 & 29 on random	79.93	Intersect N & S line 22 S South
27.42	Cut North bank of a stream 75 S. W. S. W.		Land broken 3 <sup>rd</sup> rate; Beech, Hickory, W. oak, B. oak, Span. oak, Dogwood, Ironwood; Sassafras &c.
40.00	Temporary of Sec. cor.	West	Corrected
53.40	a Stream 75 S. S. W.	18.81	a Hickory 17 in. diam.
79.96	Intersected N & S line 23 S, South	39.96	of Sec. cor. Dogwood 4 S 25 E 5
	Part level, part broken 2 <sup>nd</sup> & 3 <sup>rd</sup> rate		Beech 5 N 2 W 26
	Land; Sugar, ash, Elm, Sycamore; Spice, ash &c.		Sec. 21 <sup>st</sup> 1819
West	Corrected	59.13	a Hickory 15 in. diam.
24.60	Elm 17 in. diam.	79.93	Sec. corner.
39.98	of Sec. cor. Elm 23 S 45 E 21	West	Between Sect. 18 & 19
	Beech 3 N 50 W 15	22.34	A Beech 16 in. diam.
59.62	a Beech 14 in. diam.	30.00	a brook 6 S South
79.96	Sec. corner.	39.46	Intersected Meridian 189 S, North of post
West	Between Sect. 19 & 30		Set post: Beech 22 N 38 E 50
22.44	A Beech 17 in. diam.		Do 19 S 1 E 11
30.00	A brook 10 S South	*	Land Same
39.65	Intersect Meridian 137 North of post	North	Between Sect. 7 & 8
	Set post - Dogwood 6 N 73 W 18		(See next page.)
	Do 7 S 77 E 7	18.94	a Beech 34 in. diam.
	Land level wet 2 <sup>nd</sup> rate; Beech, ash, W. oak, Elm; Spice &c.	40.00	of Sec. cor. Beech 16 N 45 E 21
North	Between Sect. 19 & 20		Ironwood 3 S 43 W 9
24.00	a B. gum 18 in. diam.	61.53	a Hickory 16 in. diam.
40.00	of Sec. cor. Ironwood 5 S 84 W 6	80.00	Set post cor. to Sect. 5, 6, 7, 8
	Beech 6 S 43 E 6		(W. oak 18 N 50 W 14
61.94	a Beech 17 in. diam.		Do 19 S 59 E 11
80.00	Set post cor. to Sect. 17, 18, 19, 20		Land Same
	Beech 26 S 66 W 19	East	Between Sect. 5 & 8, on random
	Do 28 N 34 E 28	31.54	a Stream 10 S, W. N. W.
	Land part broken, part level 2 <sup>nd</sup> & 3 <sup>rd</sup> rate; Beech, ash, W. oak, Elm, B. gum, Sugar, Dogwood, Spice, Brians	40.00	Temporary of Sec. post
East	Between Sect. 17 & 20 on random	79.90	Intersect N & S line 6 S, North
	Temporary of Sec. post		Land broken 3 <sup>rd</sup> rate; B. oak, Beech, W. oak, Hickory, Sassafras, with Brians
71.25	Brook 10 S S. S. W.		Sec. 23 <sup>rd</sup> 1819
		West	Corrected
		19.73	a W. oak 19 in. diam.
		39.95	of Sec. cor. Ash 6 N 63 W 18
			Beech 23 S 15 E 28



## T 10 N. R 1 E

63.18	a Buck 16 in. diam.	East	Random between 8+17.
79.90	Sec. corner	40.00	Set temp 1/4 post.
West	Between Secs. 6 & 7	79.84	Intersect N & S line 12 W. S. of cor.
17.78	a W. Oak 33 in. diam.		Land &c Same.
38.64	Intersect Meridian 156 L. North	West	Corrected Between 8+17.
Set post: Beech 19 S 41 E 11		21.78	a S. Oak 17 in. dia.
Do 14 N 79 E 21		39.92	1/4 post. Dogwood S. S. 48 N. 11 +
Land broken 3 <sup>rd</sup> rate - W. Oak,			Nickony 10. N. 11 E. 21.
Beech, Hickory, B. Oak; Sassafras,		62.11	a Poplar 20 in. dia.
Whortleberry, Briars &c		79.84	L.C. Cor.
North	Between Secs. 5 & 6		
24.09	W. Oak 21 in. diam.	West	Between Secs. 7 & 18.
39.88	a Stream 15 L. N.W.	19.46	an ash 32 in. dia.
40.00	q. Sec. cor. Sycamore 14 N 74 W 42	38.78	To Meridian 181 W. S. of cor.
Poplar 10 N 83 E 52			Set post. from which
58.97	a W. Oak 15 in. diam.		a Sugar 17 in. dia. S. 39 E. 43 W. 21
84.08	Intersected Town line 260 L. East.		a Poplar 6 " " " N. 55 E. 54 "
Set post: Beech 10 S 25 W 43			Land Broken + 2 <sup>nd</sup> rate, Sugar,
Do 12 S 23 E 82			ash, Poplar, Hickory, Beech &c.
Broken 2 <sup>nd</sup> & 3 <sup>rd</sup> rate land; W. Oak,			and No Spruce, Ash &c.
Beech, B. Oak, Hickory, ash, Dog-			Will Brown, O.S.
wood, Ironwood; Briars &c			
Sec. 24 <sup>th</sup> 1819			
Surveyed by Tho <sup>s</sup> Brown S.S.			
North	Between Secs. 17 & 18.		
25.34	a Sugar 12 in. dia.		
40.00	1/4 post. B. Oak 22. S. 89 W. 6 +		
	Dogwood S. N 21 E 7.		
54.73	a Beech 18 in. dia.		
80.00	Post Cor to Secs. 7, 8, 17, & 18.		
	Beech 34. N. 59 W. 6 +		
	Elm 14, S. 15 E. 34,		
	Land Broken + 2 <sup>nd</sup> & 3 <sup>rd</sup> rates.		
	Beech, Ash, Sugar, W. Oak, B. Oak,		
	Hickory &c. Dec. 22 <sup>nd</sup> 1819.		

Township N. 11 North, Range N. 1 East 2<sup>nd</sup> Mer. 73

	Range line - var. 6.15' E	40.00	q. Sec. cor. Beech 6 S 20 W 14
North	Between Ranges 1 & 2 East, Township		Do 8 N 65 E 10
	11 North, East side of Sec. 36-7. 11 N.	70.62	Sugar 22 in. diam.
35.68	a Buck 27 in. diam.	80.00	Set post cor. of Sec. 12 & 13
37.00	a Branch 15 L. - SW		Beech 21 W 86 E 22
40.00	q. Sec. cor. Beech 18 N 12 W 20		Do 9 S 66 W 15
	Do 1 S 62 E 5		Land broken; Beech, Sugar, Poplar, ash, spruce
46.50	Creek 25 L. - West	North	On the East side of Sec. 12
71.04	Beech 24 in. diam.	24.50	a branch 4 L. - SW
80.00	Set post cor. of Sec. 25 & 36	31.00	a branch 4 L. - SW
	Beech 6 N 64 W 18	33.50	a Poplar 36 in. diam.
	Do 9 S 63 W 32	40.00	q. Sec. cor. Sugar 30 N 63 W 35
	Good farming land; Beech, Sugar, spruce		Do 24 S 44 E 41
North	On East side of Sec. 25	80.00	Set post cor. of Sec. 18 & 12
9.40	Beech 20 in. diam.		Beech 10 N 30 W 33
14.00	a Creek 100 L. - S.W.		Do 14 S 69 E 32
40.00	q. Sec. cor. Beech 10 S 30 E 8		Land Same.
	Do 8 N 47 E 19	North	On East side of Sec. 1
45.50	a Branch 12 L. - S.W.	13.00	a Creek 30 L. - SW
60.00	a Creek 30 L. - SW	30.25	a Beech 33 in. diam.
80.00	Set post cor. of Secs. 24 & 25	40.00	q. Sec. cor. Beech 12 S 62 W 20
	Sugar 20 N 21 E 13		Sugar 10 N 25 W 6
	Beech 10 S 71 E 10	64.02	a Beech 25 in. diam.
	Land 2 <sup>nd</sup> rate; Beech, Sugar, spruce	78.00	Set post corner of Townships N. 11 &
North	Between Range 1 & 2 E. side of Sec. 24		12 N. Range N. 1 & 2 E.
18.84	a W. Oak 42 in. diam.		Sugar 12 N 80 E 26
40.00	q. Sec. cor. Oak 20 S 17 E 11		Beech 7 S 65 W 24
	Beech 10 S 85 W 15		Land Same
57.94	a W. Oak 36 in. diam.		Town line -
74.50	a Branch 20 L. - S.W.	West	On Random Between Townships
80.00	Set post cor. of Secs. 13 & 24		10 & 11 N, Range 1 E.
	Beech 27 N 64 E 23	40.00	Temporary q. Sec. post
	Do 12 S 47 W 11	80.00	Temporary post for Secs. 35 & 36
	Good farming land; timber as above		Land broken; Oak &c
North	On East side of Sec. 13	West	2 <sup>nd</sup> Mile
23.39	an Oak 27 in. diam.	39.30	a Creek 50 L. - N.E.





**Office of the Monroe County Surveyor**  
**Trohn Enright-Randolph**

---

Health Services Building  
119 West 7<sup>th</sup> Street  
Bloomington, IN 47404  
Phone: (812) 349-2570

Dear User,

The following images were obtained in 2017 by the Office of the Monroe County Surveyor from the State Imaging and Microfilm Laboratory at the Indiana State Archives. The field notes and plats for Monroe County are stored on microfilm Reel 4658 at the Indiana State Archives. Each page provided by the State Imaging and Microfilm Laboratory is approximately 18MB. Our office combined the pages by Township & Range and reduced the resulting pdfs. This process may have caused some degradation in quality. We will provide unreduced images of specific pages if required. Please contact us at 812-349-2570 or at [SurveyorsOffice@co.monroe.in.us](mailto:SurveyorsOffice@co.monroe.in.us) to request a higher quality image of any specific page.

The pdfs are bookmarked with the original page numbers as assigned by the State Imaging and Microfilm Laboratory.

Be prepared to provide the county name, reel number, and the required page numbers when requesting full sized images.

If you would like a DVD of an entire county, please provide us with one DVD per county along with a self-addressed, stamped envelope.

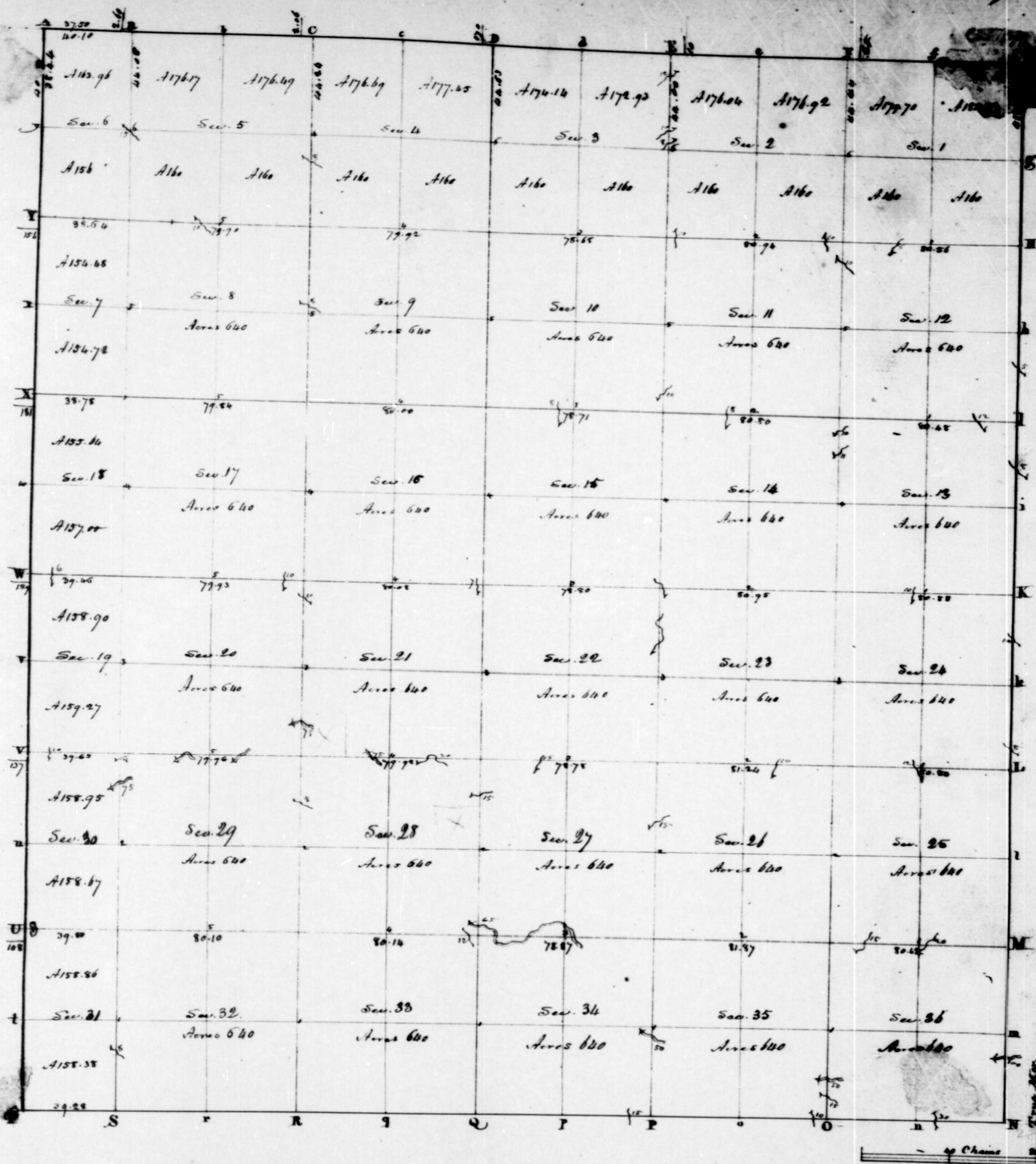
Trohn Enright-Randolph  
Monroe County Surveyor



**TION**

**RIE**





Township N. X North, Range N. I East 2. N. Mer. Surveyed by Tho. Brown 1819.

Description of the Soil on the interior Sectional lines.

Between sections	Quality &c	Between sections	Quality &c	Between sections	Quality &c
35.30	2 <sup>nd</sup> rate, Broken, Beech, Poplar, Sugar, Ash, Redwood &c.	35.33	2 <sup>nd</sup> rate, Broken	4.40	3 <sup>rd</sup> rate, Broken
35.36	2 <sup>nd</sup> rate, Broken, Beech, Poplar, Sugar, Ash, Redwood &c.	35.34	Same	4.5	Same
35.46	2 <sup>nd</sup> rate, Broken	35.34	2 <sup>nd</sup> rate, Broken, Beech, Poplar, Sugar, Ash, Redwood &c.	35.32	Same
35.53	Same	35.35	2 <sup>nd</sup> rate, Broken	35.32	Same
35.54	Same	35.35	2 <sup>nd</sup> rate, Broken, Beech, Poplar, Sugar, Ash, Redwood &c.	35.31	2 <sup>nd</sup> rate, Broken, Beech, Poplar, Sugar, Ash, Redwood &c.
35.55	Same	35.36	2 <sup>nd</sup> rate, Broken	35.30	Same
35.56	Same	35.37	2 <sup>nd</sup> rate, Broken	35.29	Same
35.57	Same	35.38	2 <sup>nd</sup> rate, Broken	35.28	Same
35.58	Same	35.39	2 <sup>nd</sup> rate, Broken	35.27	2 <sup>nd</sup> rate, Broken, Beech, Poplar, Sugar, Ash, Redwood &c.
35.59	Same	35.40	2 <sup>nd</sup> rate, Broken	35.26	2 <sup>nd</sup> rate, Broken
35.60	Same	35.41	2 <sup>nd</sup> rate, Broken	35.25	2 <sup>nd</sup> rate, Broken
35.61	Same	35.42	2 <sup>nd</sup> rate, Broken	35.24	2 <sup>nd</sup> rate, Broken
35.62	Same	35.43	2 <sup>nd</sup> rate, Broken	35.23	2 <sup>nd</sup> rate, Broken
35.63	Same	35.44	2 <sup>nd</sup> rate, Broken	35.22	2 <sup>nd</sup> rate, Broken
35.64	Same	35.45	2 <sup>nd</sup> rate, Broken	35.21	2 <sup>nd</sup> rate, Broken
35.65	Same	35.46	2 <sup>nd</sup> rate, Broken	35.20	2 <sup>nd</sup> rate, Broken
35.66	Same	35.47	2 <sup>nd</sup> rate, Broken	35.19	2 <sup>nd</sup> rate, Broken
35.67	Same	35.48	2 <sup>nd</sup> rate, Broken	35.18	2 <sup>nd</sup> rate, Broken
35.68	Same	35.49	2 <sup>nd</sup> rate, Broken	35.17	2 <sup>nd</sup> rate, Broken
35.69	Same	35.50	2 <sup>nd</sup> rate, Broken	35.16	2 <sup>nd</sup> rate, Broken
35.70	Same	35.51	2 <sup>nd</sup> rate, Broken	35.15	2 <sup>nd</sup> rate, Broken
35.71	Same	35.52	2 <sup>nd</sup> rate, Broken	35.14	2 <sup>nd</sup> rate, Broken
35.72	Same	35.53	2 <sup>nd</sup> rate, Broken	35.13	2 <sup>nd</sup> rate, Broken
35.73	Same	35.54	2 <sup>nd</sup> rate, Broken	35.12	2 <sup>nd</sup> rate, Broken
35.74	Same	35.55	2 <sup>nd</sup> rate, Broken	35.11	2 <sup>nd</sup> rate, Broken
35.75	Same	35.56	2 <sup>nd</sup> rate, Broken	35.10	2 <sup>nd</sup> rate, Broken
35.76	Same	35.57	2 <sup>nd</sup> rate, Broken	35.09	2 <sup>nd</sup> rate, Broken
35.77	Same	35.58	2 <sup>nd</sup> rate, Broken	35.08	2 <sup>nd</sup> rate, Broken
35.78	Same	35.59	2 <sup>nd</sup> rate, Broken	35.07	2 <sup>nd</sup> rate, Broken
35.79	Same	35.60	2 <sup>nd</sup> rate, Broken	35.06	2 <sup>nd</sup> rate, Broken
35.80	Same	35.61	2 <sup>nd</sup> rate, Broken	35.05	2 <sup>nd</sup> rate, Broken
35.81	Same	35.62	2 <sup>nd</sup> rate, Broken	35.04	2 <sup>nd</sup> rate, Broken
35.82	Same	35.63	2 <sup>nd</sup> rate, Broken	35.03	2 <sup>nd</sup> rate, Broken
35.83	Same	35.64	2 <sup>nd</sup> rate, Broken	35.02	2 <sup>nd</sup> rate, Broken
35.84	Same	35.65	2 <sup>nd</sup> rate, Broken	35.01	2 <sup>nd</sup> rate, Broken
35.85	Same	35.66	2 <sup>nd</sup> rate, Broken	35.00	2 <sup>nd</sup> rate, Broken
35.86	Same	35.67	2 <sup>nd</sup> rate, Broken	34.99	2 <sup>nd</sup> rate, Broken
35.87	Same	35.68	2 <sup>nd</sup> rate, Broken	34.98	2 <sup>nd</sup> rate, Broken
35.88	Same	35.69	2 <sup>nd</sup> rate, Broken	34.97	2 <sup>nd</sup> rate, Broken
35.89	Same	35.70	2 <sup>nd</sup> rate, Broken	34.96	2 <sup>nd</sup> rate, Broken
35.90	Same	35.71	2 <sup>nd</sup> rate, Broken	34.95	2 <sup>nd</sup> rate, Broken
35.91	Same	35.72	2 <sup>nd</sup> rate, Broken	34.94	2 <sup>nd</sup> rate, Broken
35.92	Same	35.73	2 <sup>nd</sup> rate, Broken	34.93	2 <sup>nd</sup> rate, Broken
35.93	Same	35.74	2 <sup>nd</sup> rate, Broken	34.92	2 <sup>nd</sup> rate, Broken
35.94	Same	35.75	2 <sup>nd</sup> rate, Broken	34.91	2 <sup>nd</sup> rate, Broken
35.95	Same	35.76	2 <sup>nd</sup> rate, Broken	34.90	2 <sup>nd</sup> rate, Broken
35.96	Same	35.77	2 <sup>nd</sup> rate, Broken	34.89	2 <sup>nd</sup> rate, Broken
35.97	Same	35.78	2 <sup>nd</sup> rate, Broken	34.88	2 <sup>nd</sup> rate, Broken
35.98	Same	35.79	2 <sup>nd</sup> rate, Broken	34.87	2 <sup>nd</sup> rate, Broken
35.99	Same	35.80	2 <sup>nd</sup> rate, Broken	34.86	2 <sup>nd</sup> rate, Broken
36.00	Same	35.81	2 <sup>nd</sup> rate, Broken	34.85	2 <sup>nd</sup> rate, Broken



## T9 N. R 1 E.

North	Between Sect. 4 & 5
17.45	A Hickory 8 in. diam.
40.00	qf. Sec. cor. Bech 12 S 85 W 29 Sugar 12 S 74 E 75
52.00	A W. Walnut 11 in. diam.
79.00	Intersected North boundary & set post, 7 <sup>th</sup> 61 <sup>st</sup> West of qf. Sec. post on South side of Sec. 33 S 10 Bech 14 N 66 E 20 Poplar 18 S 12 E 12 Land hilly & broken 2 <sup>nd</sup> rate; Poplar, Sugar, Bech &c
North	Between Sect. 7 & 8 began at qf. Sec. cor.
0.17	Old Ind. boundary
13.30	Sugar 11 in. diam.
15.00	a brook 6 in. N 80 W
40.00	Set Temporary Sec. post
East	Between Sect. 6 & 7 from old Ind. bound.
17.70	Set Temporary qf. Sec. post
54.00	Intersected N & S line 50 in. North of Temporary post. Set post at intersection for cor. of Sect. 5, 6, 7, 8 Bech 16 S 5 E 40 Do 18 N 55 W 15 Land hilly & poor; W. Oak, Hickory & Bech; Ironwood & Sassafras
West	returned West between Sect. 6 & 7
40.00	qf. Sec. cor. Gum 30 S 32 E 33 Bech 24 N 18 W 54
East	Between Sect. 5 & 8 on random
40.00	Temporary qf. Sec. post
77.00	Intersected N & S line 91 in. South Land hilly & poor; W. & B. Oak, Hickory
West	Corrected
38.50	qf. Sec. cor. Bech 12 N 4 E 46 Sugar 6 S 7 W 22
77.00	Sec. cor.

North	Between Sect. 5 & 6
21.00	a Bech 7 in. diam.
40.00	qf. Sec. cor. Bech 12 S 78 W 30 Do 10 S 73 W 40
49.40	a brook 28 in. <del>to</del> diam.
57.50	a brook 8 in. N 40 W
78.25	Intersected & set post on north boundary 5 <sup>th</sup> 34 <sup>th</sup> West of qf. Sec. post south side of Sec. 32 S 10 Bech 13 S 66 E 23 W. Oak 7 N 46 W 63 Land same.
	Surveyed in Feb. 1820 by Jas. Hedges S.S.
	from page 55.
East	Random Between Sect. 17 & 20
40.00	Set temp 1/4 post
80.22	Intersect N & S line 20 W. N. of Co. Land the same
West	Corrected Between Sect. 17 & 20.
40.11	Set 1/4 post, from which Hickory 7 N 50 W 24, Bech 6 S 7 E 18.
80.22	Sec. Cor.

Township N. 10 North, Range N. 1 East 2<sup>nd</sup> Mer.

	Range line	Var. 6° 45' E.
North	Between Ranges 1 & 2 East, Town 10	
	North, East side of Sec. 36	
14.50	a Bech 14 in. diam.	
30.50	a brook 100 in. West	
40.00	qf. Sec. cor. Bech 10 S 30 W 19 Do 10 N 1 W 24	
58.50	a W. Oak 18 in. diam.	
80.00	Set post cor. of Sect. 25 & 36 Bech 10 S 20 E 28 Hickory 10 S 75 W 4	
	Level Bech land	
North	on East side of Sec. 25	
6.50	Poplar 40 in. diam.	
40.00	qf. Sec. cor. Bech 13 N 44 W 5 Dogwood 7 S 25 E 22	
57.12	Bech 18 in. diam.	
80.00	Set post cor. of Sect. 24 & 25 Gum 22 S 37 E 8 Bech 14 N 11 E 19 Land rolling; Bech, Oak &c	
North	on East side of Sec. 24	
15.00	a brook 8 in. S-E	
28.00	a Bech 14 in. diam.	
40.00	qf. Sec. cor. Bech 14 S 8 E 18 Walnut 12 N 33 E 37	
60.00	a brook 10 in. S-E	
62.05	a Bech 14 in. diam.	
80.00	Set post cor. of Sect. 13 & 24 Bech 18 N 42 W 18 Poplar 36 S 41 W 17 Land broken; Oak, Bech &c	
North	on East side of Sec. 13	
40.00	qf. Sec. cor. Gum 14 N 1 E 28	
61.50	a brook 8 in. S-E	
		80.00 Set post cor. of Sect. 12 & 13 Oak 13 N 8 W 11 Do 7 S 54 W 6 Land brushy & broken; Oak &c
		North on East side of Sec. 12.
		23.00 a brook 5 in. S-E
		40.00 qf. Sec. cor. W. Oak 18 S 19 E 44 Dogwood 6 S 82 W 6
		80.00 Set post cor. of Sect. 1 & 12 W. Oak 8 N 14 W 3 Do 6 S 46 W 12 Land same
		North on East side of Sec. 1
		25.50 W. Oak 40 in. diam.
		40.00 qf. Sec. cor. W. Oak 24 S 35 W 64
		52.38 W. Oak 40 in. diam.
		85.00 Set post cor. of Towns 10 & 11 North Ranges 1 & 2 East, Bech 10 N 68 W 12 Sugar 12 S 81 E 18 Land broken - Oak &c. June 24 <sup>th</sup> 1889
		Town line = Random
		West Between Towns 9 & 10 N. Range 1 & 2 E, on Random - South side of Sec. 36
		30.00 a brook 7 in. North
		40.00 Temporary qf. Sec. post
		80.00 Temporary post for Sect. 35 & 36 Land level; Bech &c
		West on South side of Sec. 35
		10.65 a brook 10 in. North
		40.00 qf. Sec. Temporary post
		80.00 Temporary post for Sect. 34 & 35 Land rolling; Oak, Bech &c
		West on South side of Sec. 34
		13.80 a brook 15 in. North
		40.00 Temporary qf. Sec. post



North	Between Sect. 4 & 5	North	Between Sect. 5 & 6
17.45	A Hickory 8 in. dia.	21.00	a Beech 7 in diam.
40.00	g. Sec. cor. Beech 12 S 85 W 29	40.00	g. Sec. cor. Beech 12 S 78 W 30
	Sugar 12 S 74 E 75		do 10 S 73 W 40
52.00	A W. Walnut 11 in. dia.	49.40	a brook 28 in. <del>thick</del> diam.
79.00	Intersected North boundary & set post, 7 <sup>ch</sup> 61 <sup>4</sup> West of g. Sec. post on South side of Sec. 33 S 10	57.50	a brook 8 W. N 40 W
	Beech 14 N 66 E 20	78.25	Intersected & set post on north boundary 5 <sup>ch</sup> 34 <sup>4</sup> West of g. Sec. post south side of Sec. 32 S 10
	Poplar 18 S 12 E 12		Beech 13 S 66 E 23
	Land hilly & broken 2 <sup>d</sup> rate; Poplar, Sugar, Beech. &c		W. Oak 7 N 46 W 63
			Land same.
North	Between Sect. 7 & 8 began at g. Sec. cor.		Surveyed in Feb. 1820 by
0.17	Old Ind. boundary		Genl. Hedges S. I.
13.30	Sugar 11 <del>in</del> diam.		from page 35.
15.00	a brook 6 S. N 80 W	East	Random Between Sect. 17 & 20
40.00	Set Temporary Sec. post	40.00	set temp 1/4 post
East	Between Sect. 6 & 7 from old Ind. bound.	80.22	Intersect N & S line 20 W. N. of Cor.
17.70	Set Temporary g. Sec. post		Land the same
54.00	Intersected N & S line 50 S. North of Temporary post. Set post at intersection for cor. of Sect. 5, 6, 7, 8	Met	Corrected Between Sect. 17 & 20.
	Beech 16 S 5 E 40	40.11	Set 1/4 post, from which
	do 18 N 55 W 15		Hickory 7. N. 50 W. 24,
	Land hilly & poor; W. Oak, Hickory & Beech; Ironwood & Sassafras		Beech 6 S. 76 E 18,
West	returned West between Sect. 6 & 7	80.22	Sec. Cor.
40.00	g. Sec. cor. Gum 30 S 32 E 33		
	Beech 24 N 18 W 54		
East	Between Sect. 5 & 8 on random		
40.00	Temporary g. Sec. post		
77.00	Intersected N & S line 91 S. South		
	Land hilly & poor; W. & B. Oak, Hickory		
West	corrected		
38.50	g. Sec. cor. Beech 12 N 4 E 46		
	Sugar 6 S 7 W 22		
77.00	Sec. cor.		

Range line		Var. 6° 45' E.
North	Between Ranges 1 & 2 East, Town 10 North, East side of Sec. 36	80.00 Set post cor. of Sect. 12 & 13 Oak 13 N 8 W 11 Do 7 S 54 W 6 Land brushy & broken; oak &c
14.50	a Beech 14 in. diam.	North On East side of Sec. 12.
30.50	a Creek 100 L. West	23.00 a brook 5 L. S E
40.00	qf. Sec. cor. Beech 10 S 30 W 19 Do 10 N 1 W 24	40.00 qf. Sec. cor. W. Oak 18 S 19 E 44 Dogwood 6 S 82 W 6
58.50	a W. Oak 18 in. diam.	80.00 Set post cor. of Sect. 1 & 12 W. Oak 8 N 14 W 3 Do 6 S 46 W 12 Land same
80.00	Set post cor. of Sect. 25 & 36 Beech 10 S 20 E 28 Hickory 10 S 75 W 4 Level Beech land	
North	On East side of Sec. 25	North On East side of Sec. 1
6.50	Poplar 40 in. diam.	25.50 W. Oak 40 in. diam.
40.00	qf. Sec. cor. Beech 13 N 44 W 5 Dogwood 7 S 25 E 22	40.00 qf. Sec. cor. W. Oak 24 S 35 W 64 52.38 W. Oak 40 in. diam.
57.12	Beech 18 in. diam.	85.00 Set post cor. of Towns 10 & 11 North Ranges 1 & 2 East, Beech 10 N 68 W 12 Sugar 12 S 81 E 18 Land broken - Oak &c. Some 24 <sup>th</sup> 1899
80.00	Set post cor. of Sect. 24 & 25 Gum 22 S 37 E 8 Beech 14 N 11 E 19 Land rolling; Beech, Oak &c	
North	On East side of Sec. 24	Town line = Random
15.00	a brook 8 L. S E	West Between Towns 9 & 10 N. Ranges 1 & 2 E. On Random - South side of Sec. 36
28.00	a Beech 14 in. diam.	30.00 a brook 7 L. North
40.00	qf. Sec. cor. Beech 14 S 8 E 18 Walnut 12 N 33 E 37	40.00 Temporary qf. Sec. post
60.00	a brook 10 L. S E	80.00 Temporary post for Sect. 35 & 36 Land level; Beech &c
62.05	a Beech 14 in. diam.	West On South side of Sec. 35
80.00	Set post cor. of Sect. 13 & 24 Beech 18 N 42 W 18 Poplar 36 S 41 W 17 Land broken; Oak, Beech &c	10.65 a brook 10 L. North
North	On East side of Sec. 13	40.00 qf. Sec. Temporary post
40.00	qf. Sec. cor. Lyr 14 N 1 E 28	80.00 Temporary post for Sect. 34 & 35 Land rolling; Oak, Beech &c
61.50	a brook 8 L. S E	West On South side of Sec. 34
		13.80 a brook 15 L. North
		40.00 Temporary qf. Sec. post



## T 10 N. R 1 E.

80.00 Temporary post for Sec. 33 & 34 Land broken; Beech, Oak &c	East on South side of Sec. 35 40.00 q. Sec. cor. Beech 30 N 63 E 33 Cherry 9 N 64 W 9
West on South side of Sec. 33 40.00 Temporary q. Sec. cor.	80.00 Set post cor. of Sec. 35 & 36 Beech 8 S 65 E 20 Do 30 S 71 W 6
80.00 Temporary post for Sec. 32 & 33 Land same	East on South side of Sec. 36 40.00 q. Sec. cor. Gum 24 N 82 E 13 Beech 10 S 33 W 17
West on South side of Sec. 32 40.00 q. Sec. Temporary post	80.00 Town corner - June 25, 1819 Surveyed by John McDonald & S.
80.00 Temporary post for Sec. 31 & 32 Land broken; Oak, Hickory &c	Subdivision. Oct 24, 1819.
West on South side of Sec. 31 39.28 Intersected Meridian 5.20 L North A Town corner. Land same True line	North Between Sec. 35 & 36 10.05 a brook 15 L. NW 15.00 a Sugar 16 in. diam. 16.75 a Creek 50 L. West 28.65 a Beech 14 in. diam. 40.00 q. Sec. cor. Beech 14 N 62 E 19 Do 6 N 54 W 17 47.22 Poplar 24 in. diam. 60.32 Beech 20 in. diam. 80.00 Set post cor. of Sec. 25, 26, 35, 36 Beech 15 N 48 E 14 B. Gum 12 N 85 W 8 Land broken 2 <sup>nd</sup> rate; Beech, Poplar, Sugar, ash, Ironwood, Logwood, Spice
East Between Towns 9 & 10, Corrected South boundary of Sec. 31, 310.	East Between Sec. 25 & 36 on random 13.75 a brook 15 L. SW 40.00 Temporary q. Sec. post 44.10 a Stream 20 L. WSW 80.42 Intersect range line 33 L. North Land broken 2 <sup>nd</sup> and 3 <sup>rd</sup> rate; Beech, W. Oak, Hickory, ash; Ironwood, Logwood, briars &c
39.28 Set post cor. of Sec. 31 & 32 Beech 13 S 25 W 10 Do 10 N 32 W 24	West Corrected 23.18 a Hickory 18 in. diam. 40.21 q. Sec. cor. Beech 22 S 21 W 16 Do 16 N 10 E 35
East South side of Sec. 32 40.00 q. Sec. cor. Beech 10 S 69 E 18 Do 10 N 42 W 24	
80.00 Set post cor. of Sec. 32 & 33 Hickory 20 N 44 W 16 Walnut 12 S 59 E 29	
East on South side of Sec. 33 40.00 q. Sec. cor. Beech 24 S 10 E 23 Sassafras 8 N 5 W 9	
80.00 Set post cor. of Sec. 33 & 34 Poplar 18 S 79 E 24 Dogwood 6 N 44 W 13	
East on South side of Sec. 34 40.00 q. Sec. cor. Gum 12 N 71 E 4 Beech 8 South 13	
80.00 Set post cor. of Sec. 34 & 35 Beech 13 S 63 E 20 Do 8 N 81 W 22	

## T 10 N. R 1 E.

58.64 a Beech 17 in. diam.	East Between Sec. 13 & 24 on random 34.10 a stream 10 L. SSW
80.42 Sec. corner. - Aug. 24, 1819	40.00 Temporary q. Sec. post
North Between Sec. 25 & 26	80.88 Intersect range line 73 L. South Broken 3 <sup>rd</sup> rate land; Ches. Oak, Span. Oak, Hickory W. Oak; Sassafras, Whortle- berry, Greenbriars &c
5.00 Enter Windfall	West Corrected
25.00 Left same	22.64 Ches. Oak 16 in. diam.
26.50 a Beech 20 in. diam.	40.44 q. Sec. cor. Span. Oak 6 S 45 E 18 Dogwood 4 S 61 W 25
40.00 q. Sec. cor. Elm 4 N 75 W 20 Hickory 5 N 28 E 22	62.75 Ches. Oak 19 in. diam.
60.12 Beech 24 in. diam.	80.88 Sec. corner.
80.00 Set post cor. of Sec. 23, 24, 25, 26 Ches. Oak 11 N 72 E 10 Hickory 4 S 48 W 19 Land broken 3 <sup>rd</sup> rate - W. Oak, Beech, Hickory, Ches. Oak, Ironwood, Logwood, Whortleberry & briars.	North Between Sec. 13 & 14 22.08 W. Oak 30 in. diam.
East Between Sec. 24 & 25 on random	40.00 q. Sec. cor. W. Oak 24 N 44 W 10 Hickory 5 N 67 E 24
37.50 a Stream 12 L. SSE	64.00 a brook 11 L. SW
40.00 Temporary q. Sec. post	68.42 a Ches. Oak 14 in. diam.
80.50 Intersected Range line 12 L. North Land same	72.48 a brook 10 L. SSW
West Corrected	80.00 Set post cor. of Sec. 11, 12, 13, 14 W. Oak 24 S 61 W 85 Dogwood 3 S 32 E 12 Land same - Aug. 25, 1819
20.50 Beech 14 in. diam.	East Between Sec. 12 & 13 on random
40.25 q. Sec. cor. Sugar 12 N 31 W 33 Beech 20 S 57 W 52	40.00 Temporary q. Sec. post
59.80 Hickory 14 in. diam.	62.23 a Stream 12 L. SE
80.50 Sec. corner	80.48 Intersect Range line 120 South Land same
North Between Sec. 23 & 24	West Corrected
20.77 Red Oak 17 in. diam.	23.80 a Beech 25 in. diam.
30.87 Poplar 16 in. diam.	40.24 q. Sec. cor. B. Gum 16 S 31 W 28 Do 4 S 34 E 15
40.00 q. Sec. cor. - a Beech 24 in. diam. Beech 11 S 57 E 14 Dogwood 4 N 13 W 16	57.78 W. Oak 12 in. diam.
75.10 Beech 18 in. diam.	80.48 Sec. corner
80.00 Set post cor. of Sec. 13, 14, 23, 24 Dogwood 5 N 51 E 9 Hickory 3 S 32 W 16 Land same	



## T. 10 N. R. 1 E.

North	Between Sect. 11 & 12	North	Between Sect. 34 & 35
17.50	B. Gum 10 in. diam.	16.75	W. Oak 26 in. diam.
40.00	g. Sec. cor. Sugar 6 N 52 E 19	32.40	Hickory 30 in. diam.
	Do 5 S 31 W 14	37.48	Stream 50 S. W. N. W.
60.54	Ches. Oak 18 in. diam.	40.00	g. Sec. cor. Hickory 3 N 39 W 4
70.25	a Brook 10 S. N. W.		Buckey 16 S 33 E 15
80.00	Set post cor. to Sect 1, 2, 11, 12	59.00	Enter Windfall
	Beech 4 N 29 W 22	72.40	Left Windfall - a B. Gum Stump 18 in. diam.
	Do 25 S 23 W 44	80.00	Set post cor. of Sect 26, 27, 34, 35
	Land, first 60 ch. Broken 3 <sup>rd</sup> rate, remainder level 2 <sup>nd</sup> rate; W. Oak, Hickory, Beech, ash, Sugar; Whortleberry, briars & Spice		Dogwood 4 N 11 E 13
East	Between Sect. 14 & 12 on random		Sugar 10 N 47 W 21
24.50	a brook 8 S. W. S. W.		Land, first half level 2 <sup>nd</sup> rate, last half broken 3 <sup>rd</sup> rate; Sugar, Hickory, Walnut, Buckeye, Beech, Span. Oak, W. Oak, Ironwood, Dogwood; Spice, Hazle, briars &c.
40.00	Temporary g. Sec. cor.	East	Between Sect. 26 & 35 on random
80.56	Intersected Range line 78 S. North	20.00	Enter Windfall
	Broken 3 <sup>rd</sup> rate land - Ches. Oak, Span. Oak, W. Oak, Hickory, Dogwood, Whortleberry &c.	40.00	Temporary g. Sec. cor
West	Corrected	74.00	Left Windfall
18.13	a Hickory 14 in. diam.	81.87	Intersect N & S line 44 S. North
40.28	g. Sec. cor. W. Oak 18 S 57 W 18		4 <sup>th</sup> rate land; Span. Oak, Beech, W. Oak; briars grape vine, &c.
	Hickory 10 N 44 E 14	West	Corrected
60.78	Span. Oak 18 in. diam.	7.10	a Beech 14 in. diam.
80.56	Sec. corner.	40.93	g. Sec. cor. in Windfall - raised a pile of stones
North	Between Sect. 14 & 2	58.67	Beech 17 in. diam.
19.50	W. Oak 25 in. dia.	81.87	Sec. corner
40.00	g. Sec. cor. Span. Oak 28 N 60 W 18	North	Between Sect. 26 & 27
	Sugar 18 S 50 E 12	21.74	a Sugar 20 in. diam.
64.04	Span. Oak 6 in. dia.	40.00	g. Sec. cor. W. Oak 19 N 52 W 28
84.44	Intersected and left post on North boundary 65 S. West,		Do 14 S 53 E 21
	W. Oak 14 S 52 W 28	52.10	Stream 15 S. S. W.
	Hickory 10 S 23 E 21	62.22	Beech 18 in. diam.
	Broken 4 <sup>th</sup> rate; B. Oak, Ches. Oak, Hickory; Sassafras, Whortleberry, Briars &c.		
	Aug. 26. 1819		

## T. 10 N. R. 1 E.

80.00	Set post cor. of Sect. 22, 23, 26, 27	40.00	Temporary g. Sec. post
	W. Oak 5 N 32 E 10	80.95	Intersected N & S line 118 North of post
	W. Oak 19 N 57 W 8		Land - <del>part</del> part level 2 <sup>nd</sup> rate, part broken 3 <sup>rd</sup> rate; W. Oak, B. Oak, B. Gum, Ches. Oak, Beech, ash, Sugar, Dogwood; Sassafras, Whortleberry &c.
	Broken 3 <sup>rd</sup> rate land; W. Oak, B. Oak, Span. Oak, Hickory, Sugar, Ironwood, Dogwood, Greenbriars &c.	West	Corrected
East	Between Sect. 23 & 26 on random	16.90	B. Gum 14 in. diam.
40.00	Temporary g. Sec. post	40.47	g. Sec. cor. Beech 7 N 20 E 17
58.80	a Stream 10 S. W. S. W.		Do 14 S 10 W 12
81.24	Intersect N & S line 38 <sup>th</sup> North	50.85	a Beech 18 in. diam.
	Broken 3 <sup>rd</sup> rate - W. Oak, B. Oak, Ches. Oak, Hickory, Dogwood; Sassafras, Whortleberry & Briars	80.95	Sec. corner
West	Corrected	North	Between Sect. 14 & 15
24.56	W. Oak 14 in. diam.	1.50	a Stream 10 S. S. E.
40.62	g. Sec. cor. Poplar 6 N 51 E 8	24.75	Hickory 16 in. diam.
	Sassafras 4 N 72 W 22	40.00	g. Sec. cor. W. Oak 5 N 35 E 16
63.18	Hickory 22 in. diam.		Span. Oak 12 N 56 W 32
81.24	Sec. corner - 27 <sup>th</sup> Aug. 1819	64.57	a W. Oak 30 in. diam.
North	Between Sect. 22 & 23	80.00	Set post cor. to Sect 10, 11, 14, 15
21.25	Beech 18 in. diam.		Poplar 8 N 45 E 14
40.00	g. Sec. cor. Ironwood 5 S 45 E 6		Beech 30 S 6 W 27
	Do 4 N 42 W 18		Land broken 2 <sup>nd</sup> & 3 <sup>rd</sup> rate; Beech, W. Oak, B. Oak, Hickory, Sugar, ash, Dogwood, Ironwood; Hazle, Greenbriars - Aug. 28. 1819
59.25	a Stream 15 S. S. W.	East	Between Sect. 11 & 14 on random
60.37	Walnut 56 in. diam.	28.50	a Stream 8 S. S. W.
64.32	Same Stream S. S. E.	40.00	Temporary g. Sec. post
67.40	Same Stream S. S. W.	80.80	Intersect N & S. line at post
80.00	an Elm on West bank of said Stream		Land broken 3 <sup>rd</sup> rate; W. Oak, B. Oak, Beech, Hickory, Dogwood, Ironwood; Whortleberry &c.
	13 in. diam., cor. of Sect. 14, 15, 22, 23	West	Between Sect. 11 & 14 Marking
	Sugar 7 N 73 W 54	20.47	a W. Oak 18 in. diam.
	Elm 14 S 3 W 6	40.00	g. Sec. cor. Dogwood 3 S 32 W 14
	Broken 2 <sup>nd</sup> & 3 <sup>rd</sup> rate land; W. Oak, B. Oak, Beech, Walnut, Sugar, Sycamore; Spice &c.		W. Oak 30 N 44 W 28
East	Between Sect. 14 & 23 on random	57.00	a Hickory 14 in. diam.
0.20	a brook 10 S. S. E.	71.00	a W. Oak 19 in. diam.
		80.80	Sec. corner



North Between Sect. 10 & 11 7.00 a brook 10 S. S.W. 23.90 a B. Gum 12 in. diam. 40.00 gr. Sec. cor. B. Oak 24 N 65 E 8 Logwood 4 S 75 W 12 58.84 a Beech 30 in. dia. 80.00 Set post cor. of Sect. 2, 3, 10, 11 Sugar 3 S 57 E 10 Elm 4 S 40 W 35 Land broken 3 <sup>rd</sup> rate; B. Oak, W. Oak, Hickory, Poplar, Logwood, Ironwood; Spice &c	Beech, Hickory; Span. Oak, Poplar, Walnut, Elm; Sassafras, briars, Spice. Aug <sup>th</sup> 29. 1819
East Between Sect. 2 & 11 on random 5.20 a brook 10 S. North 40.00 Temporary gr. Sec. post 70.84 a brook 10 S. N.W. 80.94 Intersect N & S line 25 S. South Land broken 3 <sup>rd</sup> rate; W. Oak, B. Oak, Beech, Hickory, Logwood; Whortleberry, briars, &c West Corrected 15.75 a Ches. Oak 24 in. diam. 40.47 gr. Sec. cor. Beech 14 S 32 W 18 Do 12 N 72 E 27 62.25 Hickory 15 in. diam. 80.94 Sec. corner	North Between Sect. 33 & 34 19.85 a Beech 16 in. diam. 40.00 gr. Sec. cor. Logwood 4 N 10 W 7 Ironwood 3 S 43 E 22 45.00 Enter Windfall 63.00 an Elm stump 30 in. diam. 67.00 Left Windfall 80.00 Set post cor. of Sect. 27, 28, 33, 34 Beech 6 N 50 E 14 Hornbeam 4 N 79 W 12 Land first 60 ch! broken 3 <sup>rd</sup> rate, remainder level 2 <sup>nd</sup> rate; Beech, W. Oak, B. Oak, Elm, Sugar; Sassafras, Spice, briars &c
North Between Sect. 2 & 3 22.68 a W. Oak 30 in. diam. 40.00 gr. Sec. cor. Span. Oak 30 N 42 E 32 Poplar 2 S 45 W 20 45.25 a brook 8 S. wide N.E. 49.00 a brook 10 S. N.E. 60.37 a W. Walnut 16 in. diam. 74.50 a Stream 12 S. E. N.E. 84.00 Intersected <del>Trans</del> line 10 S. West Beech 4 S 58 E 24 Do 3 S 30 W 34 Land 3 <sup>rd</sup> rate; W. Oak, B. Oak,	East Between Sect. 27 & 34 on random 7.50 a stream 65 S. W. N.W. 23.00 Same stream W. S.W. 40.00 Temporary gr. Sec. post 46.00 Same stream W. N.W. 78.87 Intersected N & S line at post Land part level & part broken, 2 <sup>o</sup> . & 3 <sup>rd</sup> rate; Beech, Sugar, Hickory, Ash, Sycamore & Hornwood, Logwood; Spice, briars &c. West Between Sect. 27 & 34 - marking 17.59 a Hickory 18 in. diam. 39.43 gr. Sec. cor. Buckeye 10 S 34 E 7 Hornbeam 4 N 61 W 13 57.75 a Hickory 17 in. diam. 78.87 Sec. corner
	North Between Sect. 27 & 28 3.70 a Stream 65 S. W. N.W. 22.44 a Maple 18 in. diam.

40.00	gf. Sec. post - B. Gum 20 N 29 W 7 Beck 4 N 64 E 5	East	Between Sec. 15 & 22 on random
63.00	a Stream 15 S N S W	40.00	Temporary gf. Sec. cor.
66.05	a Sugar 21 $\frac{1}{2}$ in. diam.	78.80	Intersect N & S line 27 S, North Land broken 3 <sup>rd</sup> rate; Beech, Sugar, W. Oak, B. Oak, Hickory, Dogwood, Ironwood, Spruce, Briars &c
80.00	Set post cor. to 21, 22, 27, 28 Beech 4 N 67 W 23 B. Oak 4 S 53 E 8 Land level 2 <sup>nd</sup> rate; Beech, ash, Maple, Sugar, W. Oak, B. Oak; Spruce, hazel, Briars &c	West	Corrected
		21.72	ash 22 in. diam.
		39.40	gf. Sec. cor. Sugar 8 S 48 E 21 Do 7 N 14 W 27
		54.60	a Sugar 19 in. diam.
		78.80	Sec. corner
East	Between Sec. 22 & 27 on random	North	Between Sec. 15 & 16
30.15	a Stream 15 S S W	25.05	a Ches. Oak 19 in. diam.
40.00	Set temporary gf. Sec. post	40.00	gf. Sec. cor. Hickory 12 N 70 E 25 Do 14 S 74 W 19
78.78	Intersect N & S line 35 S, North Land part level, part broken 2 <sup>nd</sup> & 4 <sup>th</sup> rate; Beech, ash, Sugar, W. Oak, Hickory, B. Oak & Ironwood, Dogwood, Spruce, Briars &c	61.35	a Ches. Oak 16 in. diam.
West	Corrected Between Sec. 22 & 27	80.00	Set post cor. of Sec. 9, 10, 15, 16 Beech 22 N 60 W 18 Maple 24 S 82 E 41 Land 3 <sup>rd</sup> & 4 <sup>th</sup> rate, broken; Ches. Oak, Span. Oak, W. Oak, B. Oak, Beech, Dog- wood, Ironwood; Whortleberry &c
20.53	Sugar 14 in. diam.		
39.39	gf. Sec. cor. Maple 6 N 8 E 13 Hickory 16 S 72 W 16		
59.48	Beech 22 in. diam.		
78.78	Sec. corner.		
North	Between Sec. 21 & 22	East	Between Sec. 10 & 15 on random
19.93	a Beech 19 in. diam.	31.64	a Brook 8 S S.E.
40.00	gf. Sec. cor. Beech 7 N 41 E 17 Maple 14 S 68 W 16	40.00	Temporary gf. Sec. post
58.74	a W. Oak 12 in. diam.	78.71	Intersect N & S line 20 S, North Land broken 4 <sup>th</sup> rate; W. Oak, B. Oak, Hickory, Ches. Oak, Ironwood; Whortleberry
80.00	Set post cor. of Sec. 15, 16, 21, 22 Beech 18 N 50 E 10 Sugar 12 S 43 W 11 Land broken 3 <sup>rd</sup> rate; W. Oak, B. Oak, Span. Oak, Beech, Hickory, Ironwood Dogwood; Spruce - Set 16. 1819	West	Corrected
		13.10	a Beech 16 in. diam.
		39.35	gf. Sec. cor. B. Gum - N 52 W 18 W. Oak 5 S 1 E 5
		57.37	a B. Gum 18 in. diam.
		78.71	Sec. corner



## T. 10 N. R. 1 E.

North	Between Sect. 9 & 10	North	Between Sect. 32 & 33
21.05	a Ches. Oak 18 in. diam.	19.58	a Hickory 24 in. diam.
40.00	q. Sec. cor. Poplar 12 S 61 N 16	23.00	Enter Windfall
	Dogwood 4 N 64 E 18	40.00	q. Sec. cor. B. Gum Stump 20 N 70 W 37
62.54	a Poplar 28 in. diam.		Beech 6 N 30 E 43
80.00	Set post cor. of Sect. 34, 9, 10	53.50	Left Windfall
	Beech 14 N 48 E 6	57.43	a Sugar 34 in. diam.
	Do 12 S 60 W 34	80.00	Set post cor. to Sect. 28, 29, 32, 33
	Land broken 3 <sup>rd</sup> rate; W. Oak, B. Oak, Beech, Poplar, Hickory & Sassafras, Briars &c.		Beech 16 N 8 E 18
East	Between Sect. 3 & 10, on random		Poplar 13 S 28 W 17
40.00	Temporary q. Sec. post		Land broken 2 <sup>nd</sup> & 3 <sup>rd</sup> rate; Beech, Poplar, Sugar, W. Oak, Hickory, Briars, Grapevines, Sassafras &c.
78.68	Intersect N & S line 12 S South	East	Between Sect. 28 & 33 on random
	Land broken 3 <sup>rd</sup> rate; W. Oak, B. Oak, Hickory, Ash, Ches. Oak, Ironwood, Dogwood, Whortleberry	40.00	Set Temporary q. Sec. post
		74.50	a Brook 12 S N W
West	Corrected	80.14	Intersect N & S line 5 S North
22.56	B. Oak 16 in. diam.		Land part level 2 <sup>nd</sup> rate, part broken 3 <sup>rd</sup> rate; W. Oak, B. Oak, Span. Oak, Ash, Elm; Sassafras, vines, briars &c.
39.04	q. Sec. cor. Dogwood 3 N 54 W 11	West	Corrected
	Beech 30 S 20 E 15	22.99	a Beech 18 in. diam.
58.58	Ash 18 in. diam.	40.07	q. Sec. cor. W. Oak 18 N 71 W 21
78.68	Sec. corner		Do 12 S 9 E 19
North	Between Sect. 3 & 4	58.24	A Hickory 16 in. diam.
24.85	a Hickory 14 in. diam.	80.14	Sec. corner
40.00	q. Sec. cor. Span. Oak 46 N 65 E 10	North	Between Sect. 28 & 29
	Dogwood 6 S 36 W 21	20.94	A Span. Oak 10 in. dia.
57.92	a Hickory 8 in. diam.	40.00	q. Sec. cor. Beech 17 S 53 W 28
84.63	Intersected and Set post on Town line 170 S, East of cor.		Poplar 24 N 17 E 29
	Beech 23 S 55 E 19	57.82	Sugar 14 in. diam.
	Dogwood 6 S 20 W 25	60.00	A Brook 8 S W. N. W.
	Land broken 3 <sup>rd</sup> rate; Beech, Hickory, W. Oak, B. Oak; Ironwood, Dogwood; Briars &c.	80.00	Set post cor. of Sect. 20, 21, 28, 29
	Dec. 17 <sup>th</sup> 1819		Beech 22 N 39 W 22
			Do 23 S 88 W 18

## T. 10 N. R. 1 E.

	Land broken 3 <sup>rd</sup> rate; Beech, W. Oak, Span. Oak, Hickory, Poplar, Sugar; Sassafras, Briars &c.	West	Corrected
East	Between Sect. 21 & 28 on random	21.24	a Ches. Oak 20 in. diam.
29.50	a Stream 75 S W. N. W.	40.04	q. Sec. cor. Beech 10 N 24 E 10
40.00	Temporary q. Sec. post		B. Gum 17 S 2 E 22
55.25	a Stream 20 S S W	66.43	a W. Oak 30 in. diam.
61.56	Same Stream N. N. W.	80.08	Sec. corner Dec. 17 <sup>th</sup> 1819
79.92	Intersected N & S line 26 S South	North	Between Sect. 16 & 17
	Land part level, part broken 2 <sup>nd</sup> & 3 <sup>rd</sup> rate; W. Oak, Beech, Sugar, ash, Elm, Poplar; Spice &c.	25.06	a W. Oak 30 in. diam.
West	Corrected	40.00	q. Sec. cor. Maple 6 N 60 E 10
22.57	a Beech 22 in. diam.		Beech 19 S 40 W 19
39.96	q. Sec. cor. Beech 20 S 27 W 13	61.27	Span. Oak 16
	Sugar 12 N 3 E 35	80.00	Set post cor. to Sect. 8, 9, 16, 17
52.42	a Beech 18 in. diam.		W. Oak 14 S 59 E 7
79.92	Sec. corner		Ches. Oak 4 N 43 W 27
North	Between Sect. 20 & 21		Broken 3 <sup>rd</sup> rate land; W. Oak, Beech, B. Oak, Ches. Oak, Span. Oak &c. with Whortleberry & Briars
14.60	a Stream 75 S N W	East	Between Sect. 9 & 16 on random
22.48	a Beech 22 in. diam.	40.00	Temporary q. Sec. post
40.00	q. Sec. cor. Hickory 8 N 79 E 18	80.00	Intersected N & S line 26 S South
	Do 4 S 73 W 10		Land same
59.53	a W. Oak 14 in. diam.	West	Corrected
70.60	a brook 10 S S E.	22.72	a Hickory 18 in. diam.
80.00	Set post cor. of Sect. 16, 17, 20, 21	40.00	q. Sec. cor. Beech 28 S 41 E 18
	Beech 6 S 54 W 10		Beech 5 N 18 W 23
	Hornbeam 5 N 53 E 24	57.08	a Ches. Oak 10 in. diam.
	Land part level, part broken 2 <sup>nd</sup> & 3 <sup>rd</sup> rate; Beech, W. Oak, Hickory, Elm; Ash, Ironwood, Dogwood, Briars	80.00	Sec. corner
East	Between Sect. 16 & 21 on random	North	Between Sect. 8 & 9
40.00	Temporary q. Sec. cor.	20.48	Ches. Oak 16 in. diam.
79.50	a Brook 7 S S E.	40.00	q. Sec. cor. Ches. Oak 12 N 17 E 18
80.08	Intersected N & S line 22 S South		Dogwood 5 S 68 W 17
	Land broken 3 <sup>rd</sup> rate land; W. B. Span. Oak, Hickory, Dogwood, Ironwood; Briars &c.	44.80	Brook 8 S W. N. W.
		57.78	W. Oak 22 in. diam.
		80.00	Set post cor. to Sect. 4, 5, 8, 9
			B. Gum 16 N 40 E 15
			Hickory 16 N 63 W 24



## T 10 N. R 1 E.

East Land broken 3 <sup>rd</sup> rate; W. oak, B. oak, Hickory, Ches. oak, Ironwood, Whor- rberry, Sassafras, Briers, &c.	Span. oak 4 S 40 E 8 W. oak 23 N 73 W 45 Land broken 3 <sup>rd</sup> rate; Span. oak, W. oak, Buck, Hickory, ash; Sassafras, Briers, vines &c.
East Between Sect. 4 & 9 on random 40.00 Temporary q <sup>t</sup> . Sec. post	East Between Sect. 29 & 32 on random 40.00 Temporary q <sup>t</sup> . Sec. cor. 80.10 Intersect N & S line 35 L, South Land Same
79.92 Intersect N & S line 4 L, South Land broken 3 <sup>rd</sup> rate, Sugar, Buck, Hickory, ash, W. oak, B. oak; Spice, Sassafras, Briers &c.	West Corrected 21.48 A Hickory 20 in. diam. 40.05 q <sup>t</sup> . Sec. cor. Span. oak 10 N 44 W 8 Hickory 14 S 63 E 15 65.06 A W. oak 22 in. diam. 80.10 Sec. corner
West Corrected 19.73 a Buck 16 in. diam. 39.96 q <sup>t</sup> . Sec. cor. Buck 8 N 54 E 21 Elm 5 S 58 E 25 56.04 a W. oak 17 in. dia. 79.92 Sec. corner	West Corrected Between Sect. 30 & 31 19.54 W. oak 36 in. diam. 35.40 Enter pond or glade 39.50 Intersected Meridian 108 N of post Set post - Maple 6 N 55 E 10 Elm 5 S 12 W 18 Part level & part broken 2 <sup>nd</sup> & 3 <sup>rd</sup> rate; W. oak, ash, Buck, Hickory, with Sassafras, Spice &c.
North Between Sect. 4 & 5 20.73 a Ches. oak 38 in. diam. 28.44 a brook 8 L, W. N. W. 40.00 q <sup>t</sup> . Sec. cor. Hickory 10 N 76 W 25 Buck 18 S 24 E 31 60.70 a B. oak 34 in. diam. 84.24 Intersected & Set post on Town line 206 L East of cor. Buck 5 S 22 W 41 Dogwood 6 S 67 E 28 Land broken 3 <sup>rd</sup> rate; W. oak, Buck, Ches. oak, Hickory, Ironwood, Dogwood; Briers, &c. Sec. 18 <sup>th</sup> 1819	North Between Sect. 29 & 30 22.61 Sugar 18 in. diam. 40.00 q <sup>t</sup> . Sec. cor. Buck 5 N 23 E 7 B. oak 17 S 48 W 9 54.53 a Buck 28 in. diam. 67.53 a Stream 75 W. S. W. 77.56 a Brook 8 L, S. S. W. 80.00 Set post cor. of Sect. 19, 20, 29, 30 Buck 13 N 27 W 51 Hornbeam 12 S 60 E 30 Land, first 60.00 broken, not level, 2 <sup>nd</sup> & 3 <sup>rd</sup> rate; W. oak, Buck, Sugar, B. oak, Elm, Dogwood, Ironwood, Spice, Briers
North Between Sect. 31 & 32 17.64 a Buck 18 in. diam. 26.00 a brook 8 L, wide NW 28.00 Enter Windfall 40.00 q <sup>t</sup> . Sec. cor. W. oak 18 N 42 W 31 B. gum 12 S 11 E 17 61.80 a B. oak 10 in. diam. 80.00 Set post cor. of Sect. 29, 30, 31, 32	

## T 10 N. R 1 E.

East Between Sect. 20 & 29 on random	79.93 Intersect N & S line 22 L, South
27.42 Cut North bank of a Stream 75 L, W. S. W.	Land broken 3 <sup>rd</sup> rate; Buck, Hickory, W. oak, B. oak, Span. oak, Dogwood, Ironwood; Sassafras &c.
40.00 Temporary q <sup>t</sup> . Sec. cor.	West Corrected
53.40 a Stream 75 L, S. W.	18.81 a Hickory 17 in. diam.
79.96 Intersected N & S line 23 L, South	39.96 q <sup>t</sup> . Sec. cor. Dogwood 4 S 25 E 5 Buck 5 N 2 W 26
Part level, part broken 2 <sup>nd</sup> & 3 <sup>rd</sup> rate	59.13 a Hickory 15 in. diam.
Land; Sugar, ash, Elm, Sycamore; Spice, ash &c. Sec. 21 <sup>st</sup> 1819	79.93 Sec. corner.
West Corrected	West Between Sect. 18 & 19
24.60 Elm 17 in. diam.	22.34 A Buck 16 in. diam.
39.98 q <sup>t</sup> . Sec. cor. Elm 23 S 45 E 21 Buck 3 N 50 W 15	30.00 a brook 6 L, South
59.62 a Buck 14 in. diam.	39.46 Intersected Meridian 189 L, North of post Set post: Buck 22 N 38 E 50 Do 19 S 1 E 11
79.96 Sec. corner.	Land Same
West Between Sect. 19 & 30	North Between Sect. 7 & 8 (See next page.)
22.44 A Buck 17 in. diam.	18.94 a Buck 34 in. diam.
30.00 A brook 10 L, South	40.00 q <sup>t</sup> . Sec. cor. Buck 16 N 45 E 21 Ironwood 3 S 43 W 9
39.65 Intersect Meridian 137 North of post	61.53 a Hickory 16 in. diam.
Set post - Dogwood 6 N 73 W 18 Do 7 S 77 E 7	80.00 Set post cor. to Sect. 5, 6, 7, 8 W. oak 18 N 50 W 14 Do 19 S 59 E 11
Land level wet 2 <sup>nd</sup> rate; Buck, ash, W. oak, Elm; Spice &c.	Land Same
North Between Sect. 19 & 20	East Between Sect. 5 & 8, on random
24.00 a B. gum 18 in. diam.	31.54 a Stream 10 L, W. N. W.
40.00 q <sup>t</sup> . Sec. cor. Ironwood 5 S 84 W 6 Buck 6 S 43 E 6	40.00 Temporary q <sup>t</sup> . Sec. post
61.94 a Buck 17 in. diam.	79.90 Intersect N & S line 6 L, North
80.00 Set post cor. to Sect. 17, 18, 19, 20	Land broken 3 <sup>rd</sup> rate; B. oak, Buck, W. oak, Hickory, Sassafras, with Briers, Sec. 23 <sup>rd</sup> 1819
Buck 26 S 66 W 19 Do 28 N 34 E 28	West Corrected
Land part broken, part level 2 <sup>nd</sup> & 3 <sup>rd</sup> rate; Buck, ash, W. oak, Elm, B. gum, Sugar, Dogwood, Spice, Briers	19.73 a W. oak 19 in. diam.
East Between Sect. 17 & 20 on random	39.95 q <sup>t</sup> . Sec. cor. Ash 6 N 63 W 18 Buck 23 S 15 E 28
Temporary q <sup>t</sup> . Sec. post	
71.25 Brook 10 L, S. S. W.	



## T 10 N. R 1 E

63.18	a Beech 16 in. diam.	East	Random between 8 & 17.
79.90	Sec. corner	40.00	Set temp 1/4 post.
West	Between Sect. 6 & 7	79.84	Intersect N & S line 12 W. S. of cor.
17.78	a W. Oak 33 in. diam.		Land & a Same.
38.64	Intersect Meridian 156 L North	West	Corrected Between 8 & 17.
	Set post: Beech 19 S 41 E 11	21.78	a S. Oak 17 in. dia.
	Do 14 N 79 E 26	39.92	1/4 post. Dogwood S. S. 48 W. 11 +
	Land broken 3 <sup>rd</sup> rate - W. Oak,		Nickory 10. N. 11 E. 21.
	Beech, Hickory, B. Oak; Sassafras,	62.11	a Poplar 20 in. dia.
	Whortleberry, Briars &c	79.84	Sec. cor.
North	Between Sect. 5 & 6	West	Between Sect. 7 & 18.
24.09	W. Oak 21 in. diam.	19.46	An Ash 32 in. dia.
39.88	a Stream 15 L. N.W.	38.78	To Meridian 181 W. S. of cor.
40.00	q. Sec. cor. Sycamore 14 N 74 W 42		Set post. from which
	Poplar 10 N 83 E 52		a Sugar 17 in. dia. S. 39 E. 43 W. 21
58.97	a W. Oak 15 in. diam.		a Poplar 6 " " N. 55 E. 54 "
84.08	Intersected Town line 260 L East -		Land Broken + 2 <sup>nd</sup> rate, Sugar,
	Set post: Beech 10 S 25 W 43		Ash, Poplar, Nickory, Beech &c.
	Do 12 S 23 E 32		and Gro Spruce, Ash &c.
	Broken 2 <sup>nd</sup> & 3 <sup>rd</sup> rate land; W. Oak,		Thos Brown, D.S.
	Beech, B. Oak, Hickory, ash, Dog-		
	wood, Ironwood; Briars, &c		
	Sec. 24 <sup>th</sup> . 1819		
	Surveyed by Thos Brown D.S.		
North	Between Sect. 17 & 18.		
25.34	a Sugar 12 in. dia.		
40.00	1/4 post. B. Oak 22. S. 89 W. 6 +		
	Dogwood S. N 21 E 7.		
54.73	a Beech 18 in. dia.		
80.00	Post cor to Sect. 7, 8, 17, & 18.		
	Beech 34. N. 59 W. 6 +		
	Elm 14. S. 15 E. 34.		
	Land Broken + 2 <sup>nd</sup> & 3 <sup>rd</sup> rates.		
	Beech, Ash, Sugar, W. Oak, B. Oak,		
	Hickory &c. Dec. 22 <sup>nd</sup> 1819.		

Township N. 11 North, Range N. 1 East 2<sup>nd</sup> Mer. 73

	Range line - var. 6° 15' E	40.00	q. Sec. cor. Beech 6 S 20 W 14
North	Between Ranges 1 & 2 East, Township		Do 8 N 65 E 10
	11 North, East side of Sec. 36-7. 11 N.	70.62	Sugar 22 in. diam.
35.58	a Beech 27 in. diam.	80.00	Set post cor. of Sect. 12 & 13
37.00	a Branch 15 S. - SW		Beech 21 W 86 E 22
40.00	q. Sec. cor. Beech 18 N 12 W 20		Do 9 S 66 W 15
	Do 1 S 62 E 5		Land broken; Beech, Sugar, Poplar, ash, spice
46.50	Creek 25 L. West		North On the East side of Sec. 12
71.04	Beech 24 in. diam.	24.50	a branch 4 L. - SW
80.00	Set post cor. of Sect. 25 & 36	31.00	a branch 4 L. - SW
	Beech 6 N 64 W 18	33.50	A Poplar 36 in. diam.
	Do 9 S 63 W 32	40.00	q. Sec. cor. Sugar 30 N 63 W 35
	Good farming land; Beech, Sugar, spice		Do 24 S 44 E 41
North	On East side of Sec. 25	80.00	Set post cor. of Sect. 14 & 12
9.40	Beech 20 in. diam.		Beech 10 N 30 W 33
14.00	a Creek 100 L. - S.W.		Do 14 S 69 E 32
40.00	q. Sec. cor. Beech 10 S 30 E 8		Land Same.
	Do 8 N 47 E 19		North On East side of Sec. 1
45.50	a Branch 12 L. - S.W.	13.00	a Creek 30 L. SW
60.00	a Creek 30 L. SW	30.25	a Beech 33 in. diam.
80.00	Set post cor. of Sect. 24 & 25	40.00	q. Sec. cor. Beech 12 S 62 W 20
	Sugar 20 N 21 E 13		Sugar 10 N 25 W 6
	Beech 10 S 71 E 10	64.02	a Beech 25 in. diam.
	Land 2 <sup>nd</sup> rate; Beech, Sugar, spice	78.00	Set post corner of Townships N. 11 &
North	Between Ranges 1 & 2 E. side of Sec. 24		12 N. Ranges N. 1 & 2 E.
18.84	a W. Oak 42 in. diam.		Sugar 12 N 80 E 26
40.00	q. Sec. cor. Oak 20 S 17 E 11		Beech 7 S 65 W 24
	Beech 10 S 85 W 15		Land Same
57.94	a W. Oak 36 in. diam.		Town line -
74.50	a Branch 20 L. - S.W.	West	On Random Between Townships
80.00	Set post cor. of Sect. 13 & 24		10 & 11 N, Range 1 E -
	Beech 27 N 67 E 23	40.00	Temporary q. Sec. post
	Do 12 S 47 W 11	80.00	Temporary post for Sect. 35 & 36
	Good farming land; timber as above		Land broken; Oak &c
North	On East side of Sec. 13	(West	2 <sup>nd</sup> Mile
23.39	An Oak 27 in. diam.	39.30	a Creek 50 L. - N.E.



## T H N. R 1 E

40.00 Temporary q. Sec. post	East On South side of Sec. 34
80.00 Temporary post for Sect. 34 & 35	40.00 q. Sec. cor. Sugar 12 S 73 E 35
Land broken; Oak, Beech &c	Beech 10 N 41 E 35
West 3 <sup>rd</sup> Mile	80.00 Set post cor. of Sect. 34 & 35.
40.00 q. Sec. Temporary post	W. Oak 9 N 81 E 10
80.00 Temporary post for Sect. 33 & 34	Do 6 N 61 W 6
Land same	East Between on South side of Sec. 35
West 4 <sup>th</sup> Mile	40.00 q. Sec. cor. Sugar 10 N 42 E 18
40.00 Temporary q. Sec. post	Do 10 S 12 E 17
80.00 Temporary post for Sect. 32 & 33	80.00 Set post cor. of Sect. 35 & 36
Land same	B. Oak 24 S 87 E 33
West 5 <sup>th</sup> Mile	W. Oak 10 N 83 W 28
40.00 Temporary q. Sec. post	East On South side of Sec. 36
80.00 Temporary post for Sect. 31 & 32	40.00 q. Sec. cor. Poplar 12 S 64 E 11
Land same	Beech 9 N 36 W 9
West 6 <sup>th</sup> Mile	80.00 Town corner. July 1 <sup>st</sup> 1819
37.50 Intersected Meridian 7.00 S North	Surveyed by John McDonald ES.
of cor. Land same	<b>Subdivision.</b>
East True line - Var. 7 <sup>th</sup> 30' E.	Var. 5 <sup>th</sup> 55' E - Aug 30 <sup>th</sup> 1819
Corrected East between Towns 10 & 11	North Between Sect. 35 & 36
N. R 1 E - South side of Sec. 31	21.25 A Hickory 10 in. diam.
37.50 Set post cor. of Sect. 31 & 32.	40.00 q. Sec. cor. Dogwood 3 N 62 E 9
W. Oak 20 S 40 E 17	Sassafras 8 S 44 W 14
Do 12 N 73 W 5	51.74 A Beech 22 in. diam.
East On South side of Sec. 32	67.10 A Beech 18 in. diam.
40.00 q. Sec. cor. Maple 8 N 11 W 20	80.00 Set post cor. to Sect. 25, 26, 35, 36
W. Oak 20 S 87 E 26	Beech 5 S 30 W 14
80.00 Set post cor. of Sect. 32 & 33	Poplar 48 S 35 E 8
Beech 11 N 25 W 8	Land broken part 3 <sup>rd</sup> & part 4 <sup>th</sup> rate;
W. Oak 18 S 4 E 10	Poplar, Beech, W. Oak, B. Oak, Hickory;
East On South side of Sec. 33	Dogwood, Briers, Whortleberry &c
40.00 q. Sec. cor. — 12 N 60 E 17	East Between Sect. 25 & 36 on random
W. Oak 12 S 12 W 11	22.00 A Stream 50 S 12 W.
80.00 Set post cor. of Sect. 33 & 34	30.00 Same Stream N. S. W.
Beech 20 S 59 E 36	40.00 Temporary q. Sec. post
Sugar 9 N 79 W 11	

## T H N. R 1 E

80.00 Intersect Range line 100 S South	61.00 a poplar 45 in. diam.
Land level & wet; Elm, Beech, ash,	80.25 Sec. corner Aug. 31. 1819
Hackberry, Sycamore &c. Spruce &c.	North Between Sect. 23 & 24
West corrected	19.00 a Beech 14 in. diam.
20.24 A Hornbeam 5 in. diam.	40.00 q. Sec. cor. Beech 14 S 60 E 30
40.00 q. Sec. cor. Beech 14 S 57 W 21	Do 18 N 35 W 32
Do 18 N 57 E 15	66.50 a Hickory 20 in. diam.
55.64 An Elm 18 in. diam.	80.00 Set post cor. of Sect. 13, 14, 23, 24
80.00 Sec. corner Sept. 2 <sup>nd</sup> 1819	Sugar 4 S 58 E 18
North Between Sect. 25 & 26	Dogwood 4 S 21 W 27
19.12 A Beech 6 in. diam.	Land broken 2 <sup>nd</sup> rate; Beech, Hickory
29.00 A Stream 55 S N. N. W.	ash, Sugar, Poplar; Spruce &c.
40.00 q. Sec. cor. W. Oak 28 N 66 W 8	East Between Sect. 13 & 24
Beech 14 S 69 E 16	20.10 a brook 8 S S E
60.10 a Beech 16 in. diam.	40.00 Temporary q. Sec. post
71.18 a Spring branch - West	45.00 A Spring branch - South
80.00 An Elm 16 in. diam. cor to Sect. 23.	48.00 a spring - SW
24.25.26 - Ash 14 S 55 E 25	80.45 Intersected Range line 44 S South
W. Oak 14 S 52 W 20	Land rolling & rich; Sugar, ash, Poplar,
Land - first 65 ch. level wet 2 <sup>nd</sup> rate;	Beech, Walnut; Spruce &c.
Ash, W. Oak, Beech, Elm &c. - last 15 ch.	West corrected
broken 2 <sup>nd</sup> rate - Poplar, ash, Beech,	17.00 A Poplar 18 in. diam.
Hickory, W. Oak - Spruce &c.	40.22 q. Sec. cor. Beech 5 S 42 E 20
East Between Sect. 24 & 25 on random	Walnut 20 N 47 W 8
40.00 Temporary q. Sec. post	80.45 Sec. corner - Sept. 3 <sup>rd</sup> 1819.
" " Enter Swamp	North Between Sect. 13 & 14
52.50 Left Swamp	15.10 a Beech 18 in. diam.
75.25 A brook 15 S N. S. W.	30.00 a Beech 20 in. diam.
80.25 Intersected Range line 85 S South	40.00 q. Sec. cor. Beech 12 S 71 W 12
Land part broken & part level & swampy	Do 28 N 29 E 21
3 <sup>rd</sup> rate - W. Oak, Beech, Poplar, ash	60.15 An Elm 14 in. diam.
Maple &c. Ironwood, Spruce &c.	71.50 a brook 12 S wide West
West corrected	80.00 Set post cor. of Sect. 11, 12, 13, 14
21.50 a Beech 12 in. diam.	Elm 18 S 20 E 28
40.12 q. Sec. cor. Beech 10 N 20 E 10	Beech 3 S 65 W 42
Elm 12 S 37 W 24	Land part level & rich 2 <sup>nd</sup> rate, part
	broken; ash, Walnut, Poplar, Beech, Sugar
	Spruce &c.